

# PARADISE PARK MASONIC CLUB BULLETIN BOARD

OCTOBER 2004

## JACK'S NOTES

There are a couple of matters that I am about which I am very concerned. The first is that recently we had a child injured while riding a skateboard down one of the many hills in the park. Unfortunately skateboards do not have brakes and he ran into the side of a moving car. Fortunately all he ended up with was a broken bone, where if he had slid under the back wheels of the car it could have been fatal. Our Rules and Procedures presently permit skateboarding in the Park except for Cardiac Hill. Should we list all the hills in the Park, or designate only certain places for skateboarding or ban it all together? I solicit your comments, particularly from the parents of skateboard age children.

The second concern is that this past summer there were several instances where it was obvious that several juveniles were gathering in various places in the Park and drinking beer and leaving the empty cans tossed aside. We were not able to catch them but we will. I ask, "Parents do you know where your children are and what they are doing?" How about smelling their breath when they come in late in the evening. Better to find out now than when the problem expands to hard liquor or drugs.

The third is a reminder that all roads in the Park are designated Fire and Emergency Vehicle Roads. If you park so as to block the passage of one of those Emergency Vehicles you could be held legally liable.

I am going to discontinue my office hours on Wednesday afternoons due to lack of interest. However I am often in the office on Monday, Wednesday and Friday afternoons. If you see me drop in and say. "Hi!"

## PPMC EMERGENCY RESPONSE TEAM

Doug Hipsley

The ERT message to the members of PPMC is ***DON'T BE LEFT BEHIND***. Become a participant, the life or property you could be able to participate in saving could be yours, your family's, or your neighbors'. This is your opportunity to give something back to your community beyond anything else.

The **first step** is having the desire to be in a position to do something extraordinary for Paradise Park. The **second step** is to call **Chief Greg Laskey @ 458-0343** and ask him what you can do to protect our community. The **third step** is to call our training coordinator, **Ted Keller, @ 425-2646** and get on the schedule for the next round of classes.

Positions available in the ERT are: fire fighters, medical responders, traffic controllers, community safety specialists, and disaster preparedness planners. As soon as we are ready, we want to certify an in-house trainer and conduct our own CERT and VIP classes.

Ideally, volunteers will have three levels of training which include; Community Emergency Response Training (CERT), Volunteers in Prevention (VIP) and CPR/AED training. Give Ted a call and get scheduled for the next training classes.

PPMC has six AED's disbursed around the park. They're here to save your life! You must always first call 911 in case of any emergency. The ERT Traffic Controllers will report to their assigned intersections to provide direction to emergency vehicles. The Medical Response Team will respond to the scene of the incident and provide medical aid until the emergency professionals arrive.

***DON'T BE LEFT BEHIND!*** Become part of the PPMC ERT. The life you save could be your own. Contact a committee member now and get involved. Chairman, Doug Hipsley 429-93421; Alternate Chairman & Administrative Coordinator, Lloyd Ames 425-0825; Fire Chief, Greg Laskey 458-0343; Training Coordinator, Ted Keller 425-2646; Traffic Control Coordinator, Ray Hoffman 426-2819; and Community Safety, Bob Biendle 429-9420.

Call one of these folks today and get on board.

## IMPORTANT INFORMATION FROM THE BOARD

1. **PARK POST OFFICE:** The Board adopted the following policy. If you have forgotten your mailbox key, you will be expected to go home and get it. Also at the recommendation of our Postmaster, only the following people will be authorized to enter the mailroom: Mail carrier; Mail sorters; Manager; Office staff; Directors of the Board. The staff will continue to hand out packages and certified or registered mail.
2. **TOWN HALL MEETINGS:** The Board has decided not to sponsor Town Hall meetings. If you wish to sponsor a Town Hall meeting, you are welcome to do so.
3. **BAY TREE RULE CHANGED AGAIN:** Last month the Board approved the cutting of Bay Trees without going through the Tree Request process. This policy has been refined. You must have permission of the Manager before cutting a Bay Tree and must follow the Tree Rules regarding insurance and use of a licensed contractor.
4. **DEFIBRILLATORS:** The four new Automatic External Defibrillators (AED) purchased by the Board have arrived and are assigned to trained volunteers. The six park defibrillators are now assigned to Ted Keller, Don & Shirley Moore, Greg & Becky Laskey, Doug & Pam Hipsley, Diana & Jim Cook and Manager Bob Koger.
5. **DECEMBER BOARD MEETING DATE CHANGED:** The December Board Meeting will be on second Saturday of December; December 11<sup>th</sup>, not the 18<sup>th</sup> as previously announced.
6. **GATE CODE CHANGE:** The gate code will be changed on October 15. Get the new code from the Office.
7. **PARKING RULE:** The Board has directed the manager to enforce the current parking rule that reads: "PARKING- Park vehicles on your own allotment if possible. Do not park on Club's property without Manager's permission to do so or on another Member's Allotment without permission of that member." The Manager will be warning violators and keeping records for the Board.
8. **TRAILERS:** The Board has directed the Manager to enforce the current rule regarding the storage of un-garaged trailers. The rule reads: STORAGE OF VECHICLES-Storage of Rv's / Campers / Boats / Trailers is not permitted unless garaged. ..." The Manager will be warning violators and keeping records for the Board. It is the board interpretation that a trailer is a trailer and does not distinguish between a house and a utility trailer.
9. **RIVER CLEANING VOLUNTEERS NEEDED:** The Manager needs volunteers to help remove the cut trees and brush along the river. If you are willing to help, please contact the Manager at the Office.

## Paradise Park Masonic Club MEMBERSHIP APPLICATIONS PENDING

<u>Applicant</u>	<u>Date posted</u>	<u>Seller</u>	<u>Allotment</u>
<u>MEMBER CANDIDATE</u>			
Donald Joseph Radder	08/09/04	Jerry Morgan	343 The Royal Arch
<u>ASSOCIATE MEMBER</u>			
Linda Ingalls Haswell	08/11/04	Frank Haswell	525 St. Ambrose Street
Shirley Jean Radder	08/09/04	Donald Joseph Radder	343 The Royal Arch
Michael K. Pottinger	08/06/04	Lauren C. Pottinger	144 St. Alban Street
Marian E. Sibley	05/21/04	Richard T. Sibley	280 Keystone Way
Mary-Lynn Brecht	05/18/04	Betty H. Brecht	377 Hiram Road
April Duke	03/31/04	Nancy Kell	128 Keystone Way
<u>ALTERNATE ASSOCIATE MEMBER</u>			
Laura Ellet St. Laurent	08/11/04	Frank Haswell	525 St. Ambrose Street
Julie Kathleen Radder	08/09/04	Donald Joseph Radder	343 The Royal Arch
Thomas Clayton Brown	06/01/04	Norman Clayton Brown	677 St. Paul Street
Amanda L. Cooper	03/16/04	Timothy B. Cooper	614 Keystone Way
Sara Diane Laskey	09/09/04	Greg R. Laskey	646 St. Augustine Avenue

## RECREATION REPORT

Everyone sure clears out of here after they get their mementos of the summer. It has been so quiet; you can even hear the Waste Management truck! Trophies were being handed out at quite a fast pace over Labor Day. Contests were being held and not only being fielded by the allotment's best and supported by the largest crowds we've seen all year, but new winners emerged from the competitions. One thing was noted, everyone had a proud smile on their faces; just to be in Paradise Park brought a smile to so many all summer. I know it has to me.

I'd like to again thank everyone who helped make Labor Day and summer long activities such a success for us. Lois Hardy for shaking the bush and getting "Hosts" for the weekly "wienie" roasts and we're all rooting for her to get back on her feet, she's missed!

### Special Thanks:

The concession stand was charged by Dick Fisher and his crew, . . . you can't imagine so many stories being told in such a little space.

The games by the events' coordinators: their short reports are elsewhere in the Bulletin.

The dance decoration and treats by Sharon Naraghi and Lee Heathorn.

Support staff of the crew, office staff under the direction of our Manager Bob, they helped get the tables, chairs, BBQ where they should be and aided in the break-down afterward.

The Mentoring of Bob and Tiny Sand (and family), without them there would be no summer in Paradise Park, another year and another successful summer, thank-you both again and again.

And of course your Recreation Committee, without their input and behind the scene work none of this would come about. Karen Eneboe for her unending support and strength to guide the rest of her crew through the maze of what it takes to pull everything off, to Cal Crawford, Lisa Leong, Craig Little and again to Lois Hardy, they are your Recreation, if you enjoyed the summer let them know, if you didn't let me know.

We have pumpkin carving coming the Saturday before Halloween in the Picnic Grounds, everything furnished but your imagination.

The Annual Holiday Party is coming the first part of December, again graciously hosted by Bob and Tiny Sand. Get your list off to Santa and your voice to volunteer to Tiny or Karen in the office. We need cooks, decorators and people to assist Santa by being there!

Your liaison for the Board in the way of food, fun, frolic and fellowship, *Bill Eckard*

### REMINDER CONCERNING RENOVATIONS, REMODELING, ETC.

If you plan any remodeling, repair or maintenance of your home, please do the following:

- ▶ Let your neighbors know.
- ▶ Provide a short letter to the Park Manager concerning your plans.
- ▶ Wait for the approval of the Manager and/or the Building Committee.

There are a variety of County Building Code requirements and Park related concerns that may be involved, depending upon the scope of your specific plans. Drawings and/or sketches may be required. Please follow these guidelines. We will try to provide a quick response to you.

*Bill Hardwick, Building Committee*

## PRE-LABOR DAY ACTIVITIES

### GOLF TOURNAMENT

We had 40 golfers signed up and 39 actually played, in spite of it being the hottest day of the year. Marcia Obsniuk donated 40 plus hats and everyone had fun picking out the one that best suited their "personality". Thanks Marcia !! John Vogal ,with help from son Matthew and grandma Cappy, set up a putting contest. Jim Reynolds won. Three holes, three putts. Way to go Jim. Some had as many as eight putts, but we won't name names. Thanks John and crew. You really started our tournament off on the right foot, or should I say putt?

After sweltering a round of nine holes on the course, we had our awards party in the cool, shaded picnic grounds with the most sumptuous food you can imagine (brought by all the participants).

Now for the awards:

Men's low gross ----- Marshall Shoquist	Men's longest ball ----- Harold Smith
Women's low gross ----- Liz Maynard	Women's longest ball ----- Marci Miller
Men's low net ----- Marshall Shogquist	Men's closest to pin ----- Mike Mollica
Women's low net ----- Liz Maynard	Women's closest to pin ----- Liz Maynard

Congratulations to the winners and to the rest of the gang. We better practice a little more this coming year. Thanks to Fred Dunn-Ruiz for the tally above.

Craig Little has volunteered to be chairman for 2005. Thanks Craig. We are all behind you.

*Marilyn Wells, chairperson*

### QUACKER REGATTA

Another successful running of the Quacker Regatta. Thanks go to the three Bills (Uber, Lind & Eckard) for running the race, to Jim Reynolds and Cal Crawford for organizing the Hot-dog booth and to Karen Eneboe for ticket sales and general assistance. About \$150 were raised for the Recreation Fund. Thanks to all that made this a successful event.

Winners:

1st place, Mark James (new member's spouse) 644 St. Augustine Avenue;  
2nd place, Jenna Likins, 561 King Solomon Drive;  
3rd place, Will Wiseman, 582 Scottishrite Avenue;  
4th place, Milton Jones (one of the OLDER kids), 106 Keystone Way.

## LABOR DAY ACTIVITIES

### PING PONG

Adult Prizes: 1<sup>st</sup>: Bill Frey. 2<sup>nd</sup>: Brian Lepu. 3<sup>rd</sup>: Jean Allan. 4<sup>th</sup>: Ron Weaver

*Editors note: If the unidentified winners will send their name and prize won to the Office, we will print them next month.*

### SHUFFLEBOARD

Fifty-six people played—there were moms, dads, sisters, brothers, grandparents and grandchildren all joining together. Prizes: 1st: Mike Shively and Diane Shively. 2<sup>nd</sup>: Blake swimmer and Kristi Swimmer. 3<sup>rd</sup>: Brad Hughes and Sebastian Jacobs. 4<sup>th</sup>: Brandon Swanson and Holly Swanson.

Mother Nature gave us good weather. Paradise Park gave us great families. Bill Eckard got us hot dogs, tables, water and clean courts and my niece Candance Almanza gave me great support.

Thanks to all.....*Linda Dobson*

Continued on Next Page

## LABOR DAY ACTIVIES

*Continued*

### VOLLEYBALL

It was a scorching day on the sand. Sizzling serves, big blocks, dynamic digs, fantastic fun was all part of the experience. Thirty-eight people participated in the event.

Prizes: 1<sup>st</sup>: Jim Dobson, Mike Dobson, Bryan Dunn-Ruiz and Michelle Sato. 2<sup>nd</sup>: Mark Atencio, Jen Atencio, Tom Dobson and Steven Schultz. 3<sup>rd</sup>: Craig Little, Kelly Malpas, John ??? and Chad ???. 4<sup>th</sup>: Alexa Naraghi, Ron Rundell. Jim Schultz and Gio ???.

A special thanks goes out to Bill Eckard for the tables, tents and cold water. Fred Dunn-Ruiz provided steady support and organizational help. Thanks to everyone for a good year.....*Jim Dobson*

*Editors note: If the unidentified winners will send their names to the Office, we will print them next month.*

### TENNIS

Twenty-four persons participated—8 juniors and 16 adults.

Junior Prizes: 1<sup>st</sup>: Alisha Shively and Kevin Swimmer. 2<sup>nd</sup>: Hannah Forbes and Tyler Likins.

Adult Prizes: 1<sup>st</sup>: Frank Haswell and Chris Unti. 2<sup>nd</sup>: Laura St. Laurent and Mike Minium. 3<sup>rd</sup>: Mike Shively and Andrew Forbes. 4<sup>th</sup>: Chris Carlson and John Forbes.

Thanks go to Mike Dungan and Mike Minium for cleaning the courts, to Frank Haswell for assisting with the draw and to Bill Eckard who set up the tables and tents for tennis and the hotdog stand. A special thanks to all the spectators who braved the heat to watch some good, entertaining tennis matches.....*Fred Dunn-Ruiz*

### HORSESHOES

Early Saturday morn the horseshoe inventory was checked, the tournament site was raked free of redwood feathers and the pits were watered down. Shortly thereafter the ringing of metal upon metal was heard as potential players practiced their pitches for the forthcoming matches. High noon struck, the horses bucked and 32 challengers (limited in age from 9 to 90) representing 16 teams of doubles were ready for action. The ringing echoed through Paradise as pitch followed pitch and ringer followed ringer. By 3:30 the field was slimmed down to four surviving teams. The pits were re-raked and watered down for the final play-offs. By 4 PM the ringing stopped, the dust settled and the trophies were awarded. Prizes: Golden Ringers, 1<sup>st</sup>: Ron Weaver and Bill Frey. Silver Shoes, 2<sup>nd</sup>: Tom Dobson and Marc Atencio. Bronze Shoes, 3<sup>rd</sup>: Eric Doberenz and grandson Blake Swimmer. Honorable Pitchers, 4<sup>th</sup>: John Forbes and Amanda Fode.

As he received his award, Ron assured the cheering crowd that the reason for his success was based upon the skill and finesse of his and Bill's pitching arms and not the distraction brought about by the glow of his lilac (not Purple) socks. His opponents quietly questioned his assertion!

Well done to ALL 32 participants. Thanks for making it so much fun to organize and monitor such a ringing success!.....*Doug Dobson, Head Horseshoer*

### CRIBBAGE

There were twenty-six members and guests playing in this year's Cribbage tournament. It is always a pleasure to see such a wide age group enjoying the competition. This is one event that the whole family can participate in, and often does. There were players of every age group represented. The only real qualification is that a player must be able to play unassisted and understand the rules of the game. The runners-up this year were Buzz Bradley and Bob Biendle. The finalists represented a real "Family Feud", with Mike Dobson winning out over his dad, Doug Dobson. Each runner-up and the first and Second Place winners were presented with Cribbage boards with the Paradise Park Masonic Club coin inlayed in the surface. Snacks were furnished by the Recreation fund. Karron and Lloyd Ames were happy to host the event and furnish the beverages.

*Llyod Ames, Host*

## UP COMING EVENTS

### EMERGENCY SIREN TESTS

At 1:00 P.M.  
on Board Meeting Saturdays

### KNITTIN' KITTENS LADIES' CANASTA

First Monday each Month  
Social Hall, 11:30 A.M.

Monday, October 4, 2004  
\*Monday, November 8, 2004

\* Indicates 2<sup>nd</sup> Monday

*Sponsored by Pat Rundell*

### BINGO

Third Wednesday each month  
Social Hall, 6:30 P.M.

Wednesday, October 20, 2004  
Wednesday, November 17, 2004

### MEN'S CLUB

First Wednesday of the Month  
Small Social Hall, 11:30 A.M.

October 6, 2004  
Guest Speaker, Deputy Chief Matt Tracy  
of the Santa Cruz Fire Department

### HALLOWEEN EVENTS

#### PUMPKIN CARVING

Saturday, October 23, 2004

Picnic Grounds, 1-3

ALL MATERIALS PROVIDED

PLEASE CALL OFFICE TO REGISTER SO  
ENOUGH SUPPLIES ARE PURCHASED

#### TRICK OR TREAT

Sunday, October 31, 2004

CALL OFFICE TO SIGN-UP AS A SAFE HOUSE

### ANNUAL HOLIDAY PARTY

SUNDAY, DECEMBER 12, 2004

Social Hall, 1:00 pm

### MASONIC OUTREACH

Third Thursday of each month  
Small Social Hall, 10 A.M.-noon

October 14, 2004

November 18, 2004

*Kristi Kampe*  
*Solidad Martinez*

### Yesterday, Today, and Tomorrow:

#### A History Class

Presented by Dr. Laina Farhat-Holzman

A fee of \$40 for materials will be charged.

Classes run from noon 'til 2:30; (bring a bag lunch)  
in our Social Hall.

*October 6: Globalization --- beyond economics (the  
globalization of religion and other bad Ideas)*

*October 13: The Iraq War (where it stands now)*

For information on Laina Farhat-Holzman, see last month's  
bulletin or call Lynn.

To register or for more information, contact Lynn  
Raadik (425-1038 or [Lraadik@ixnetcom.com](mailto:Lraadik@ixnetcom.com))

### SIMPLY YOGA

EVERY THURSDAY

10:00 - 11:30

Social Hall

Please arrive early; wear warm, comfortable clothes;  
bring blanket/mat; have empty stomach

*Tripura Anand*

420-1008

### POTLUCK

1<sup>ST</sup> OF THE SEASON

BOARD MEETING SATURDAYS

SOCIAL HALL

SATURDAY, OCTOBER 16, 2004

SATURDAY, NOVEMBER 20, 2004

HOSTS STILL NEEDED

CALL OFFICE

## PARADISE PARK CALENDAR OF EVENTS

DATE	EVENT	Venue	MEMBER/Chair
<b>October 2004</b>			
2-Sat.	<b>VNA Flu Immunization Clinic 9-12</b>	Small Social Hall	VNA
2-Sat.	Family Picnic 10-8pm	Picnic Grounds	T. Cooper
4-Mon.	Knittin' Kittens 11:30 am - 4:30 pm	Small Social Hall	P. Rundell
5-Tue.	Coffee 9-11am	Small Social Hall	???
5-Tue.	Tole Painting 7-10	Small Social Hall	A. Walters
6-Wed.	Men's Club 11:30	Small Social Hall	R. Hoffman
6-Wed.	History Class 12-2:30pm	Large Social Hall	L. Raadik
7-Thu.	Simply Yoga 10-11:30	Large Social Hall	T. Anand
12-Tue.	Coffee 9-11am	Small Social Hall	???
12-Tue.	Tole Painting 7-10	Small Social Hall	A. Walters
13-Wed.	History Class 12-2:30pm	Small Social Hall	L. Raadik
14-Thu.	Simply Yoga 10-11:30	Large Social Hall	T. Anand
16-Sat.	BOD Open Meeting 9am	Small Social Hall	J. Fisher
16-Sat.	Recreation/Activities Cmt. Mtg. 3pm	Small Social Hall	B. Eckard
16-Sat.	Potluck 5:30	Large Social Hall	?
19-Tue.	Coffee 9-11am	Small Social Hall	???
19-Tue.	Tole Painting 7-10	Small Social Hall	A. Walters
20-Wed.	Bingo 6:30pm	Large Social Hall	Y. & M. Jones
21-Thu.	Masonic Outreach, Kristi Kampel 10am-12pm	Small Social Hall	Masonic Home
21-Thu.	Simply Yoga 10-11:30	Large Social Hall	T. Anand
23-Sat.	<b>Pumpkin Carving 1-3pm</b>	Picnic Grounds	Rec. Cmt.
26-Tue.	Coffee 9-11am	Small Social Hall	???
26-Tue.	Tole Painting 7-10	Small Social Hall	A. Walters
28-Thu.	Simply Yoga 10-11:30	Large Social Hall	T. Anand
<b>31-Sun.</b>	<b>Halloween Trick or Treaters</b>	<b>Various Safe Houses - sign up in the Office</b>	
<b>November 2004</b>			
<b>2-Tue.</b>	<b>Presidential Election 7am - 8pm</b>	<b>Small Social Hall</b>	<b>Election</b>
2-Tue.	Coffee 9-11am	Kitchen?Large Social Hall?	???
2-Tue.	Tole Painting 7-10	Kitchen?Large Social Hall?	A. Walters
3-Wed.	Men's Club 11:30	Small Social Hall	R. Hoffman
8-Mon.	Knittin' Kittens 11:30 - 4:30	Small Social Hall	P. Rundell
9-Tue.	Coffee 9-11am	Small Social Hall	???
9-Tue.	Tole Painting 7-10	Small Social Hall	A. Walters
16-Tue.	Coffee 9-11am	Small Social Hall	???
16-Tue.	Tole Painting 7-10	Small Social Hall	A. Walters
17-Wed.	Bingo 6:30-8:00pm	Large Social Hall	Y. & M. Jones
18-Thu.	Masonic Outreach, Kristi Kampel 10am-12pm	Small Social Hall	Masonic Home
20-Sat.	BOD Open Meeting 9am	Small Social Hall	J. Fisher
20-Sat.	Recreation/Activities Cmt. Mtg. 3pm	Small Social Hall	B. Eckard
20-Sat.	Potluck 5:30	Large Social Hall	<b>hosts needed</b>
23-Tue.	Coffee 9-11am	Small Social Hall	???
23-Tue.	Tole Painting 7-10	Small Social Hall	A. Walters
<b>25-Thu.</b>	<b>THANKSGIVING - OFFICE CLOSED</b>		
30-Tue.	Coffee 9-11am	Small Social Hall	???
30-Tue.	Tole Painting 7-10	Small Social Hall	A. Walters

## TREASURER'S REPORT

Comments indicate that the membership finds the detailed accounting of the PPMC budget (begun last month) more informative. This month another column has been added to the treasurer's financial report to provide you with an additional summary. This is the "under(+)/ over(-) budget" column which is the difference between the actual expenses to date (column 2) and the budgeted expenses to date (column 3). Under-budget categories are positive (+) and over-budget categories are negative (-). We remain within budget this month with \$161,405 spent (to date) which is under the \$170,933 budgeted amount by a savings of \$9,529.

The process of adjusting our savings and CD deposits to obtain higher interest returns is mostly completed. We are now receiving an average APR of about 1.6% which is 1.1% more (triple) than the previous 0.44% (as of June 30, 2004). On an average annual deposit balance of \$500,000, this would result in an annual interest increase of \$5,500 which would save us about three days of expenses (see August Bulletin). As well as receiving higher interest rates, our liquidity has also been improved by shifting from CDs to savings accounts. The funds covered by FDIC insurance remain the same (just under \$500,000) since we are deposited in five institutions. As more favorable interest rates become available at other banks, funds may be shifted to increase our FDIC coverage and further increase our APR return.

This month the insurance committee, committee guests, and myself have been reviewing the PPMC business insurance (\$47,000 budget), workman's compensation insurance (\$17,000 budget), and employee health insurance (\$21,000 budget). Special attention is being given to the coverages and premiums of our various policies. Detailed lists of adjustments have been compiled for the business insurance. Further work is needed for the other insurances. Formal recommendations will be made to the BOD. This is a very detailed process. The results will be reported to you as soon as possible. We hope to expand/add some needed coverage yet reduce or maintain the total premium.

The major budget categories were discussed in the September Bulletin. Our annual budget is \$512,800, which apportions into the following major categories: employment expense (40%), member services (23%), taxes (11%), insurance (9%), repair and maintenance (8%), office expense (6%), and other expenses (3%). For your reference, the employment expenses which comprise 40% of our budget are highlighted below.

(Treasurer's Comment)  
*My View from Shangri-La*  
(Lost Horizon, Columbia pictures,  
Dir. Frank Capra, 1937).

Advisor Mr. Chang speaking to diplomat Mr.  
Conway:

*'They live to a very old age here. But we like to  
believe it is the absence of struggle in the way  
we live.'*

Since we all live in Paradise, should we not try  
to practice this wise thought?

*Claude Lindquist*

### EMPLOYMENT EXPENSE \$206,500 (2004-2005)



### WEST NILE VIRUS

- Mosquitoes breed in standing water.
- Don't let water accumulate even in small containers like planter, pet dishes or rain gauges.
- Check for trapped water in tarps that cover stored items, depressions in driveways, holes in trees, cast off tires, empty paint cans, etc.
- Flush birdbaths, play pools, livestock troughs and pet watering bowls at least twice a week.
- Treat standing water that can't be drained by pouring a little vegetable oil on the surface or use Mosquito Dunks, a Bti-containing "biscuit" available at garden centers that kills mosquito larvae.
- **Report** birds believed to have died within the past 24 hours, especially crows, ravens, scrub jays, stellar jays, magpies, sparrows, finches and red-tailed hawks, to the California Department of Health Services West Nile Virus hotline (887) 968-2473 (887-WNV-BIRD) or [westnile.ca.gov](http://westnile.ca.gov) or [santacruzhealth.org](http://santacruzhealth.org)

Paradise Park Masonic Club Operating Budget for Year Ending April 30, 2005

<b>Income:</b>		Tax Expenses Continued: Sum column B	\$54,000.00
Member Assessments	\$453,962.00	Filing/Nonprofit Fees	\$200.00
Member Dues	\$39,100.00	<b>Total Tax Expense</b>	<b>\$54,200.00</b>
Membership Transfer Fees	\$4,000.00		
TAD Penalties	\$4,000.00	<b>Miscellaneous Expenses:</b>	
Member Finance Charges	\$1,200.00	Small Tools/Shop Supplies	\$500.00
Member Services: Debris	\$3,000.00	Recreational Activities	\$3,000.00
Member Delivery Charges	\$1,000.00	Director Mileage Reimb	\$500.00
Facility Use Fees	\$2,000.00	Directors Board Expense	\$0.00
Bank Interest	\$0.00	Other Miscellaneous Expense	\$100.00
Donations	\$0.00	<b>Total Miscellaneous Expense</b>	<b>\$4,100.00</b>
Miscellaneous Income	\$300.00		
Bulletin Subscriptions		<b>Vehicle Maint Expenses:</b>	
Recycling		Gasoline and Oil	\$5,000.00
Compost Sales		1988 Chevy Crew Cab	\$3,000.00
PPMC Gazette Ads		1987 Ford F-150 Utility Truck	\$0.00
SBA		1986 Ford F-600 Dump Truck	\$0.00
AT&T	\$6,400.00	2004 Chevy	\$500.00
		1996 F-350 Tilt Frame Truck	\$2,000.00
<b>TOTAL INCOME</b>	<b>\$514,962.00</b>	1979 M/F Tractor	\$1,000.00
		1992 Ford Tractor	\$0.00
		Vehicle Rental	\$2,000.00
<b>Employment Expense:</b>		General Vehicle Maint	\$0.00
Manager	\$41,000.00	<b>Total Vehicle Maint Expense</b>	<b>\$13,500.00</b>
Assistant Manager	\$0.00		
Administrative Assistant	\$28,000.00	<b>Fire Equipment:</b>	
Bookkeeper	\$11,600.00	Chevy	
Crew Foreman	\$0.00	International	
Crew-Other	\$52,000.00	Firetruck	
Crew/Office Temp		General Fire Equip R&M	\$1,000.00
Office Support	\$3,000.00	<b>Total Fire Equipment Expense</b>	<b>\$1,000.00</b>
Crew Support	\$4,500.00		
Bonus	\$2,000.00	<b>Building R &amp; M:</b>	
Health Insurance	\$21,000.00	Office Building	\$3,000.00
Employer Tax	\$22,000.00	Firehouse	\$1,000.00
Trash Pickup	\$0.00	Social Hall	\$500.00
Employee Increases	\$4,400.00	Gate House/Picnic Shed	\$500.00
<b>Total Employment Expense</b>	<b>\$189,500.00</b>	Bridge	\$1,000.00
		General Bldg R & M	\$3,000.00
<b>Insurance:</b>		<b>Total Building R &amp; M Expense</b>	<b>\$9,000.00</b>
Worker's Comp	\$17,000.00		
Excess Liability		<b>Equip Rentals, Repairs &amp; Maint:</b>	
General Business	\$47,000.00	Office Equip/Generator	\$2,500.00
Volunteer Fire		Power Tools R & M	\$500.00
Directors/Officers Liability		Equip Rentals	
Employer's Practices		<b>Total Equip R, R &amp; M Expense</b>	<b>\$3,000.00</b>
<b>Total Insurance Expense</b>	<b>\$64,000.00</b>		
		<b>Park Repairs &amp; Maint:</b>	
<b>General Expense:</b>		Water Sys	\$1,000.00
Supplies	\$7,500.00	Grounds/Drains Maint	\$3,000.00
Postage	\$4,800.00	Roads	\$1,000.00
Communications	\$3,500.00	Drains Maint	\$0.00
Propane	\$3,000.00	Tree Trimming	\$10,000.00
Electricity	\$10,000.00	Recreation Facilities	\$1,000.00
<b>Total General Expense</b>	<b>\$28,800.00</b>	River/Dam Maint	
		<b>Total Park Repairs &amp; Maint</b>	<b>\$16,000.00</b>
<b>Member Service Expense:</b>			
Water	\$70,000.00	<b>Other Operating Expenses:</b>	
Security/Safety	\$1,000.00	Dues/Subscriptions	\$600.00
Green Waste	\$4,500.00	Audit	\$4,000.00
Mailings/Printing	\$6,000.00	Legal	\$7,500.00
Mailings/Postage	\$0.00	Bank Charges	\$100.00
Waste Management	\$35,000.00	Historical Committee	\$1,000.00
<b>Total Member Service Expense</b>	<b>\$116,500.00</b>	SBA Interest Expense	
		<b>Total Other Operating Expense</b>	<b>\$13,200.00</b>
<b>Tax Expenses:</b>			
PPMC Co Prop Tax	\$49,000.00	<b>TOTAL EXPENSE</b>	<b>\$512,800.00</b>
State Taxes	\$2,000.00		
Federal Taxes	\$3,000.00		
		<b>Budget Excess / (Deficit)</b>	<b>\$2,162.00</b>

## IN MEMORIUM

John Bishop, 9/16/04

William "Beau" Beaumont, 9/17/04

Clifford Gerlach, 9/23/04

### - - - LETTERS FROM THE MEMBERSHIP - - -

Your Letters From the Membership and articles of interest to the membership are welcomed for publication. Deadline for submitting articles is the Monday following the Board meeting. Submit articles to F Dunn-Ruiz, 606 Paradise Park or [dunruiz@hotmail.com](mailto:dunruiz@hotmail.com) in Microsoft word format. Letters to the Editor must be limited to 150 words (longer letters are subject to cutting), contain no negative reference to individuals, and be accurate regarding legal or procedural issues - omitting hearsay and gossip.

Many thanks to Wilma Vinson and Jim Cook and the Community Emergency Response Team - & 911 for the quick response when I had a "Black out" recently. It happened while Wilma and I were out walking on an extremely hot day near the Powder House. The Masonic care and love that was expressed made me proud to be a resident of our beautiful Park. I recovered quickly and son "Gus" and Linda drove me home. Thank you all for your concern.  
*Sincerely, Betty Gladding*

### A QUILT THANK YOU!

For more than thirty-five years, my husband, children and I have been coming to Paradise Park to visit the Dunn-Ruiz family. We have enjoyed many good times and participated in Park activities on occasion at the invitation of Fred and Mary Jo. We were at the Lobster Feed in July when I saw the raffle quilt on display and immediately knew it was to be mine! I was shocked and thrilled, however, that it really became mine during the raffle drawing on Labor Day weekend. I am a quilter and sew a lot, which gives me an even greater appreciation for the absolutely beautiful design of the quilt made with hand-dyed fabrics. My sincere thanks to the Paradise Park Quilters who created this treasure, which looks stunning in our home and reminds us of pleasant times in the redwoods in Paradise Park!

*Sincerely, Jane Tankersley, Santa Clara, CA*

Editor's Note: Thanks to The Paradise Park Quilters: Jackie Linqvist, Barbara Brown, Betsy Stiefelmaier and Judy Wahl. They raised \$850 for the Almoner's Fund with this year's raffle.

### INJURED ANIMAL AID

Recently I discovered the following resource when we had a squirrel fall out of a tree and break its back and then a few days later found a sickly mouse in our driveway. I thought it would be good if all Paradise Park Members could know that the following organization exists in Santa Cruz. It is the Native Animal Rescue (NAR) service which is located in Santa Cruz and is "dedicated to preserving local wildlife and habitat and preventing the suffering of wild animals through rehabilitation and community education." It is a non-profit organization and is "the only facility in Santa Cruz County licensed as a wildlife rehabilitation center (for any type of wildlife) by the California Dept. of Fish and Game, the U.S. Department of Interior, and the U.S. Department of Fish and Wildlife...The staff and volunteers at NAR are trained to provide the best medical care possible, 24/7...If you see an animal in need, call the NAR hotline at 462-0726." I suggest writing down their name and number on your PPMC Roster so you'll have it when you need it. Their name and number is also listed in the Yellow Pages under Animal Shelter and Support Services. NAR does not charge for their services but they do accept donations. *Barb Brown*

## Draft Minutes – September 18, 2004 – PPMC BOD Meeting

1.0 Roll Call at 9:02; President Jack Fisher led the meeting; also present were Vice President Frank Haswell, Secretary Fred Dunn-Ruiz, Treasurer Claude Lindquist, and Director At Large Bill Eckard. Some 16 general members were also in attendance.

a. Invocation was given by Bill Eckard.

b. Several late items were added to the agenda: 4.a.4.b. proposed bylaw on recall, 4.i. home sales, 4.j. post office policy.

c. Report from Executive Sessions: Discussed one member having the authority to speak for another member without Power of Attorney. Interviewed & approved the following: Estelle McKinnon as Associate for Shiela Reedy @ 160 St. Bernard Street; Doreen Cooper as Associate for Timothy Cooper @ 614 Keystone Way; Karen Likins Morse as Associate for James Likins @ 568 King Solomon Drive; Michael Sawley for extended guest privileges @ 413 Joppa Street. Discussed a situation of a deceased member without an Associate. Discussed river cleaning status. Discussed unsightly storage on allotment, vehicles stored in common area, garden infringing upon road, degenerating construction tarp, fining a member for beginning construction without permits. The Board accepts the Audit report. It was moved to accept the Executive Session Minutes. Passed.

### 2.0 Consent Items

a. Consent agenda, approved the Minutes & Financial Reports, with a correction of percentage, from .175 to .75, to the Treasurer's report. Excepted are the prospective members & extended guest, who have yet to be interviewed.

### 3.0 Manager's Report

#### a. Daily Reports

b. Manager Bob Koger expressed thanks to the volunteers for river clearing. He should not have cleared the islands. Therefore, all clearing will cease until next year. In the immediate future, we must remove all cuttings & replant the islands, hoping no fine will follow. The Bocce courts are finished except for seating & backfilling & walkway. Road cracks are being sealed on Amaranth. The Office downstairs restrooms are floor tiled & resinked. Bids are being received on waterlines from the Powder House through section 4 & including the storage tank at the Social Hall. Last Sunday there was an accident on Keystone Way to a skateboarder, who incurred a compound fracture. The question of liability to the Park was raised. The Rules & Procedures restrict skateboarding only from the Office to the bottom of Cardiac Hill. Bob wants to start brush dragging, hopefully starting Monday, with volunteers welcome. This job must be finished before the rains start. Jack added comments on the Park having a number of dangerous hills for skateboarding, although he doesn't want a blanket outlawing of skateboarding. He prefers to add that liability to parents. Lloyd Ames recalled skateboarding control efforts were also taken when he was on the Board. Our lawyers then said if we allowed or created an attractive nuisance, we were liable. The Board then picked a small section on Royal Arch by the A-frame to be the accepted area for skateboarding. Since then, we changed rules & have newly paved roads, and many near misses have happened. Ted Keller wants to add non-motorized scooters to the prohibition. Jack said the Board will address a change to the Rules & Procedures. Veronica Lewis expressed a need for a posting of this skateboarding rule when it's passed. Lloyd reminded that posting is not sufficient; it requires all of the membership to actively enforce the Rules & Procedures within their realm of influence. Fred asked the Manager about any bid on yard waste enclosure. We have received one bid for \$8,600 for a chain length fencing. Fred said that was not what they talked about; we don't need to protect the yard waste, but rather to hide it. We need something like trees in planters that can be moved; part of what was asked for was a PLAN for hiding it. Bob Koger will get together with Diana Cook and WM to discuss/plan.

### 4.0 Unfinished Business

#### a. Committee Reports

1. Assessment Study - Malcolm Kirby; nothing to report.

2. Budget - Diana Cook; not present.

3. Building - Bill Hardwick; nothing to report.

4. Bylaws - Bill Hardwick; a. proposed amendment by Bob Morgan, referred to Bill Hardwick for committee study, being open to propose changes to the proposal; b. a proposed bylaw relating to the recall of Board member(s) was twice published in the bulletin, with no responses received from any members. Fred moved to accept as written, and to present to the membership at the next scheduled election for their vote.

5. Dam - Malcolm Kirby; agreement on several significant areas has been met. Fish & Game proposed a fish ladder on the face of the dam for juvenile fish, from June 16 to October 1. One outstanding issue is the need to have a review by all sorts of people. We feel we should be exempt, because it's not a new plan, it's an existing use, not even a project. We are considering a redesign to make it a hinge dam, so it wouldn't even need to be removed. CA Environmental Quality Act is the big stickler, which we don't believe we should have to be under. We're asking to 5 years' length permit. Fred asked for the estimate from Bosso for his total cost of carrying forward this search for

500 gal/minute is the fire department & the city water department standard. Malcolm showed a water pressure loss chart that supports an 8" pipe to supply greater pressure all through our system, primarily for the purpose of fire fighting. The City Water Department has money budgeted to replace pipe to PPMC, currently 6" pipe, with 8" pipe, within 3 years. Bob Biendle requested a conduit from the Powder House to the Office of 1" PVC pipe, with pull boxes along the way, to house the electric line for the emergency stop sign lights on the Entrance Road. No drainage specs are included in the plans for the water system. Drainage is to be separately bid. The water pipe across the Bridge is to be separately bid. The Water tank at the Social Hall is not tied in with this bidding.

b. Treasurer's Report - Claude Lindquist; Possible Capital gains tax might be due on the remaining castle money, \$210,000, so that capital needs to be spent by May 23, 2005, to avoid the tax. Any capital project needs to be started not later than April 1, 2005. Overall we spent \$41K this month, and we are \$9,500 under budget to date. Claude has completed the adjusting of various deposits, gaining a higher rate of interest in savings than in CD's; \$5,500 more interest should be gained. FDIC coverage is not changed, although the funds are in 5 different institutions. An Insurance review has happened, under the chair of Jim Langford. There might be an increase in the deductible, removing of some coverage, addition of some coverage. The committee is revisiting the coverage on buildings, except the Bridge. A required SBA insurance on the Office might be transferred to the Bridge. Some depreciated equipment could be removed. A summary of adjustments and a statement of premium adjustments will be coming from our agent Brit Thompson. Doug Hipsley is looking into liability coverage of CERT's workers. Fred suggested the Good Samaritan law would cover them. Elwood Schut has joined the Insurance Committee; he is looking into obtaining some competitive bids. Employee health insurance will be looked at. Workmen's Compensation will be looked into as far as past employees' claims.

c. At the last Board meeting, it was voted to require 3 affirmative votes for any action. Since this was not in accord with our Bylaws, the previous resolution was rescinded.

d. Parking off allotments; Agreed to have Manager enforce the current rule which states "**PARKING- Park vehicles on your own allotment if possible. Do not park on Club's property without Manager's permission to do so or on another Member's Allotment without permission of that member.**" Manager is to keep records of violators. Manager is also to enforce rule regarding un-garaged trailers stored on allotments. We discussed that a trailer is a trailer; there is no distinction between house and utility trailers when licensing.

e. Social Hall report - Bob Biendle: There are a number of safety issues that need action immediately, such as EXIT signs need to be upgraded and maintained, flood lights are needed on the porch & steps, another double door is needed on the west wall for an additional exit, a room capacity sign is needed in the large room. Bob presented 2 estimates, (1) doing it ourselves, costing \$5,000 with in house supervision & volunteers, or (2) by contractor, costing \$20,000. New Furnaces bids are \$6,000 and from Furnace Room, \$18,400. Bob Biendle would like one new generator to feed the Social Hall, Firehouse, and Office. Jack asked Bob to submit an estimate when he has the costs in hand. The Capacity of the Social Hall building, both rooms, is to be acquired by Greg Laskey, plus emergency exit signs. He is also tasked to inquire if additional exits are needed. A motion was made to rewire the Social Hall via in house to Bob Biendle's specs, spending no more than \$7,500, including permits (Bob to go to County to acquire permit). Seconded. Amended that the work is only to be commenced upon acquisition of a permit-in-kind. When the project is inspected by the County and approved, then our liability is protected. Fred asked if this could be completed by January 1, 2005. Yes, per Bob Biendle. Curtains that were put up on stage should be checked for fire-proofing. Jack said to take them down, as most assuredly not fireproofed. Amendment passed. Original motion passed. Bill Lind said it behooves us to get the permit as soon as possible. Agreed, and Bob Biendle will start the process upon return in one week.

f. Town Hall meetings; this idea was run in the bulletin, with only 3 responses received, such meetings should not be necessary except for special items; anyone can call one, not necessarily run by the Board. Therefore, no town hall meetings will be scheduled until/unless a need is presented.

g. Post Office Mail Retrieval; it was moved to accept the post office policy as published in bulletin. Carried.

h. We review the draft Rules Card. Decided that it was not up to date and thus referred it to the Orientation Committee for update.

i. Review a proposed change in Sales/Purchase process and will discuss at Oct. meeting.

j. Xx

k. Agreed to change rule regarding bay tree removal to require Member to get Manager's approval before beginning work. This assures that work is being done according to Tree Rule guidelines with respect to insurance and licensed contractor.

## 5. NEW BUSINESS

a.

## 6. DISCUSSION

## 7. INFORMATION

(a-e) Membership Changes: none

- (f) **Members Pending** (see attached listing).
- (g) 8/21/04 Incident Report re: Urgent Unsanitary Condition of Neighbor's Septic System, Section 4. Discussed, noted no comments from Manager and need update on issue.
- (h) 8/23/04 Planning Dept. permit approval, Section 4.
- (i) 8/31/04 notice from our lawyers of Petition re: improvements sale, Section 6.
- (j) 9/7/04 notice from member of submittal of new drawings, Park Water System.

**8. CORRESPONDENCE**

- (a) Correspondence Log
- (b) 8/5/04 letter to J.C. Fisher from member re: slander, etc., Section 6.
- (c) 8/23/04 letter to member from BOD re: refund on Social Hall use.
- (d) 8/23/04 letter to member from BOD re: neighbors solution, Section 2.
- (e) 8/23/04 letter to member's heir from BOD re: improvement sale processes.
- (f) 8/23/04 letter to member from BOD re: requested meeting with BOD, Section 2.
- (g) 8/23/04 letter to member from BOD re: construction fine, Section 6.
- (h) 8/24/04 letter to member from BOD re: neighborhood noise, Section 2.
- (i) 8/24/04 letter to member from BOD re: membership procedures, Section 6.
- (j) 8/26/04 email to Tree Cmt. chair from member re: preview cmt. meeting.
- (k) 8/30/04 letter to member from BOD re: committee efforts.
- (l) 8/30/04 letter to member from BOD re: committee efforts.
- (m) 8/30/04 letter to member from BOD re: committee efforts.
- (n) 8/30/04 letter to member from BOD re: committee efforts.
- (o) 8/30/04 letter to member from BOD re: representation, Section 6.
- (p) 8/30/04 letter to member from BOD re: requested sale of allotment portion, Section 1.

Adjourned at 12:15; items not covered during the open meeting would be covered during a later Executive Session. Such items have been incorporated herein; that afternoon session adjourned at 4:14 pm.

**ACTIVE COMMITTEES**

If you wish to be on any of these committees please contact Jack Fisher at 831-429-9397:

<u>COMMITTEE</u>	<u>CHAIRPERSON</u>
Assessment Study	Malcolm Kirby
Budget	Diana Cook
Building	Bill Hardwick
By Laws	Bill Hardwick
Dam	Malcolm Kirby
Emergency Response Implementation Team	Doug Hipsley
Fire & Rescue	Greg Laskey
Flea Market 04	Charlotte Reynolds & Tiny Sand
Fleet	Greg Laskey
Historical	Barry Brown
Industrial Safety	TBA (Diana Cook)
Long Range Planning	Chuck Buchanan
Orientation	Anna & Bill Lind
Past Presidents	Bob Biendle
Recreation	Bill Eckard
Staking	Bill Lind
Tree	Steve Taylor
Water/Roads	George Saam
Waste management	Diana Cook

*Paradise Park Masonic Club*

BOARD OF DIRECTORS

**2004 – 2005 MEETING DATES**

**Executive Session 7:30 am**

**Open Meeting 9:00 am**

**10/16/04**

**11/20/04**

**12/11/04**

**01/15/05**

**02/19/05**

**03/19/05**

**04/16/05**

**05/21/05**

**06/18/05**

**07/02/05 Annual Meeting 7:00 P.M.**

**REMINDER CONCERNING TREE WORK**

Before you trim or cut down any tree, please check with the Office. Copies of the current Tree Rules are available at the Office.

# CHARCOAL RETORTS

Above, you can see Louis Abraham Manseau who, at 33, came to work at the California Powder Works in 1863. When this picture was taken in 1898, he had become "Boss of the Retorts". The retort process turned wood into charcoal which was one of the main ingredients used for the manufacture of explosives; other components were sulfur and saltpeter. An important factor in the quality of the powder produced, the preparation of charcoal required both skill and care. A good charcoal could be produced from almost any wood, but the quality of the charcoal varied with the nature of the wood. The woods primarily used here at the California Powder Works were madrone and oak for blasting and low grade powders, and willow and alder for the better grades, such as "sporting" powders. All the wood used at the California Powder Works came from this area.

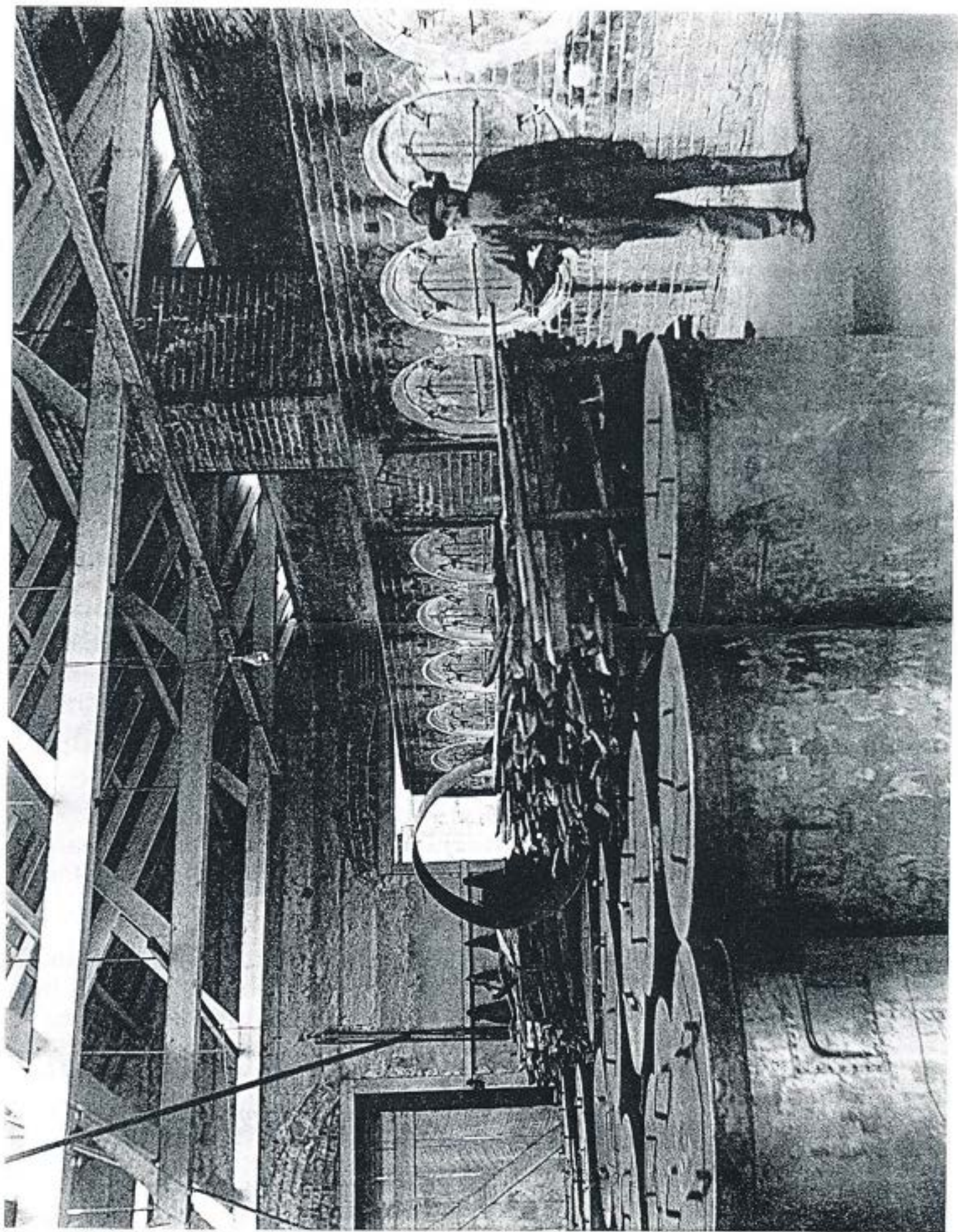
The following is from the *Santa Cruz Surf*, 1893.

"In this building there are two rows of cylindrical ovens each holding one-fifth of a cord of wood, there being ten ovens in a row built horizontally into heavy brickwork. Each row has a furnace the heat from which, in about eight hours, converts the wood into charcoal. Some 1500 cords of wood are consumed each year in making charcoal besides the redwood used for fuel. Upon being withdrawn from the ovens the charcoal is put into large tight cans to cool and after forty-eight hours, is carried to the grinding mill."

The California Powder Works' retorts provided the charcoal used in the blasting powder which built the transcontinental railroads, and 30 years later, made the powder for Admiral Dewey's guns at Manila during the Spanish-American War of 1898.

The Manseaus had four daughters and four sons. Their oldest, William, born in Santa Cruz in 1866, died in a Powder Works explosion in 1907. It was not uncommon at the California Powder Works for several generations of workers to come from the same family.

PPMC Historical Committee 2004



# FOR SALE BY MEMBER

Member's improvements offered for sale as of September 25, 2004. All allotment use privileges and Membership are subject to the approval of the Board of Directors.

## IMPORTANT NOTICE

The sellers solely provide the descriptions of improvements for sale. Such information is not verified or checked for accuracy by Paradise Park Masonic Club, Inc. The Club does not warrant, and disclaims any responsibility for, the accuracy, truthfulness or completeness of any information provided. All questions about allotment improvements should be addressed solely to the seller.

ADDRESS	MEMBER	PRICE	DESCRIPTION
SECTION 1			
SECTION 2			
362 Eastern Star	Norene S. Hansen Call Akinda for appt. 831/425-2842	\$172,000	Private/sunny location, 2BR, 1BA, >1,917 sq ft improvements; basement/utility rm; 120 sq ft garage & lg deck; new 30yr roof in 2002, new Hot Springs spa/hot tub, remod. interior incl carpet & ceramic tile; auto-sprinkler system, veg. garden & fish pond, generator inc. View online at <a href="http://64.166.244.241/362ESR">http://64.166.244.241/362ESR</a>
364 Eastern Star	Jeanne Jelick Call for Appt./Info. 831/429-2215	\$179,500	Cute little 4BR + sleeping loft or 2BR + office + den. Upgraded septic & electric. Modern kitchen, stack washer/dryer. Good sun & great privacy w/huge beautifully landscaped allotment. Call 831/429-2215, 426-7666, 325-3928.
SECTION 3			
216 Keystone Way	Ann Pfaff Contact Jim @ 831/818-4480	\$380,000	1 BA, 2 BR, 6,600 sq ft allotment, 1,212 sq ft improvements, new windows, doors, framing, vaulted wood ceiling, roof, deck w/river view, all new hardwood floors, forced air heating; includes gas range, built-in microwave w/vent, dishwasher.
SECTION 4			
591 Keystone Way	James M. Keeton 559/251-4396	\$165,000 cell 559/970-0911	1 BA, 2BR, 900 sq ft improvements, lg covered front deck, parking stall below, incl. 2 gas free-standing heating stoves, kitchen gas range, washer/dryer, refrigerator.
615 St. Augustine Ave	Norman Holbrook H 925/831-8678 W 925/931-9898	\$87,500	1 BA 1BR, 3,650 sq ft allotment, 725 sq ft improvements, private corner lot, carport, extra parking, knotty pine, wood floors, deck, near beach & tennis, good condition, incl wood stove, range, dishwasher.
678 St. Paul Street	Sonnichsen/Stalder Deke Sonnichsen 650/326-7679	\$65,000	Cabin on Eagle Creek, 3 BR, 2 BA, large kitchen and large living room, dining area, electric floor heating. Appliances included: Refrigerator, gas range, and turkey roaster. Furnishings include Beds, chairs, and sofas.
SECTION 6			
114 Keystone Way	Myron Kegebein 831/425-5144	\$182,500 \$3,000 under appraisal	On San Lorenzo River high above flood; near park entrance; sunny allotment; new \$3,000 mahogany deck on front; attractive gazebo overlooking river; 2 BR 1 BA; laundry rm; new refrig, dishwasher, stone fireplace; double windows throughout; easy maintenance.
126 Keystone Way	Gretchen Williams 831/423-6043 or D/I Logan 423-5343	\$575,000 SOME FINANCING	3 BR, 2 1/2 BA, 3,000 sq ft improvements; 1600 sq ft decking, private river beach, sunken dining/living rm, bar area, 2-way fireplace, forced air heating, wine cellar. Perfect for full-time family or multi-family vacation home.
146 St. Alban St.	Larry N. Gilliland 831/423-5634 831/234-3129	\$300,000	2 BA, 2 BR, 1400 sq ft living + 480 sq ft 2-car garage on Keystone Way; just painted; lg deck in back, deck in front; storage shed; lg kitchen & all appliances; central heat & lg propane free-standing stove in living rm; new hot water heater.
170 St. Bernard St.	Hazel Kindwall C. Unger 458-3086 Or 760/758-3548	\$200,000 NO FINANCING AVAILABLE	Sunny lot, 2 BR, 1 1/2 BA, new double pane windows, 1 <sup>st</sup> floor laundry room 1/2 BA, workshop garage, guest cottage, 2 <sup>nd</sup> floor 2 BR, BA, den, eat in kitchen, living dining rm, pantry, office alcove, newer dbl wide frige, W&D & stove; make offer.
175 St. Bernard St.	Larry Colburn To see, 423-5343	\$255,000	1 BR, 1 BA, 1100 sq ft w/deck overlooking river; new 1990/foundation engineered for 100 yr flood; built to earthquake standards. To see, 423-5343; message, 802/868-9262. Ample off street parking, 2-3 car garage. Owner w/finance \$100,000 of purchase price.
189 St. Bernard St.	Miriam Kourik 831/426-8224	\$235,000	Split level home, 2 BR, 1 1/2 BA, new septic tank, new roof; sunny with nice yard; allotment located in front of the Park.
191 St. Bernard St.	Malcolm Kirby 831/460-0544 By Appointment	\$499,000 Financing	Upstairs - 2 BR, 2 BA, office, kit, vaulted great room, rock fireplace, A/C, Deck. Downstairs - 2 BR, 1/2 BA, living, kitchenette. Workshop. Separate entrance, 2450 sq ft. Attach Garage. Highway 9 Bus Stop. Wall-to-wall glass—overlooks open space, river.

## 2004 - 2005 PPMC BOARD OF DIRECTORS AND OFFICE STAFF

President: Jack Fisher  
Email: [fishjack@sbcglobal.net](mailto:fishjack@sbcglobal.net)  
Phone: 831-429-9397

Vice President: Frank Haswell  
Email: [tennistime@prodigy.net](mailto:tennistime@prodigy.net)  
Home Phone: 925-552-7095  
Business Phone: 925-837-3320  
Park Phone: 831-454-9105

Secretary: Fred Dunn-Ruiz  
Email: [dunnruiz@hotmail.com](mailto:dunnruiz@hotmail.com)  
Phone: 831-457-9681

Recreation Director: Bill Eckard  
Phone: 831-458-2020

Treasurer: Claude Lindquist  
Email: [treasurer\\_ppmc@sbcglobal.net](mailto:treasurer_ppmc@sbcglobal.net)  
Phone: 831-457-9206

Park Manager: Bob Koger  
\*Email: [manager\\_ppmc@sbcglobal.net](mailto:manager_ppmc@sbcglobal.net)  
Office Phone: 831-423-1530  
Cell Phone: 831-345-0879

Park Secretary, Bookkeeper  
\*Email: [secretary\\_ppmc@sbcglobal.net](mailto:secretary_ppmc@sbcglobal.net)  
[bookkeeper\\_ppmc@sbcglobal.net](mailto:bookkeeper_ppmc@sbcglobal.net)  
Office Phone: 831-423-1530

\*Note: PPMC email addresses have an underscore between title and ppmc