

# PARADISE PARK

## G A Z E T T E

### From Manager Jack...

Hello again, and I hope you had a happy 4<sup>th</sup> of July! Well, we made it through another month and are now well into summer. The Park is really buzzing with activity.

#### Summer Stuff Means Fun

We've got sleepovers and pancake breakfasts courtesy of the San Francisco assembly of Rainbow Girls coming up this Saturday night and Sunday morning, so please attend.

We just finished (the first, but hopefully not the last) Paradise Park "All-Wheels" Parade. Great job, Cheryl Molfino and Company.

There's a BBQ this Sunday for the Santa Cruz Shrine Club. Hotdog roasts every Saturday night from now lasting throughout the summer. And lastly, don't forget the Clambake coming up in August. Tickets are available in the Office, so get yours early. And this is just a few of the events happening around the Park.

#### New Crew Members

During the last few weeks you may have noticed a couple of new faces on the crew — Eric Bernard and Tim Copeland. Tim and Eric are on summer break from Santa

Cruz High School and will be working in the Park during that time. Their primary duties are Park beautification projects. Last week they spent five full days cleaning up the debris that fell from the trees over the winter in the picnic grounds.

In addition to cleaning, you may have noticed at the annual picnic last Sunday that all the tables and both podiums were freshly painted. That was the work of Tim and Eric. So far they have done a wonderful job and I have many more areas around the Park that they will be visiting very soon. Good job, guys.

#### Resurfacing the Exit Road

If you recall from last month's bulletin, I talked about resurfacing the exit road to extend its life. That project has been pushed back a little and is now slated to *begin on Thursday, July 18<sup>th</sup>* and should be reopened by Sunday or Monday, July 21<sup>st</sup> or 22<sup>nd</sup>.

During this time it will be necessary to activate the traffic lights on the entrance road making it "two-way" traffic during that time. Remember that the lights cycle (change) every **THREE MIN-**

*(continued on page 3)*

### Chuck's Corner

Congratulations and thanks for the great participation in the elections. Eighty percent of the PPMC members cast a ballot.

#### Board Officers

Thanks for your support. Those elected had a brief organizational meeting after the annual meeting. The results are: **Chuck Buchanan, President; Tod Likins, Vice President; Bill Eckard, Secretary; Barbara Monti, Treasurer; and Fred Dunn-Ruiz, Member at Large** who will head up the recreation activities planning.

#### Categories of Concern

Most of the projects, activities, and issues in PPMC fall into one or more of these categories: Health & Safety, Community Building, and Environmental Stewardship. There is also interest in PPMC administration and use of re-

*(continued on page 2)*

#### Paradise Park Gazette

The *Paradise Park Gazette* is a monthly publication of the Paradise Park Masonic Club. Send your articles to Virginia Williams, Editor, 488 Paradise Park, Santa Cruz, CA 95060, phone or message: 423-8904. You may also e-mail your articles to me at [virginia@wmsburg.org](mailto:virginia@wmsburg.org). Submission deadline is the Friday following the Board Meeting. Distribution will then be the first few days of the following month.



## Chuck's Corner...

(continued from page 1)

sources. There will be opportunities to serve in all areas as we form committees and work groups to propose, plan, and accomplish projects and tasks over the next year. We will be working to assure the continuity of our great community both long and short-term.

### Communication is Key

I believe that in order for us to be as strong as we can be requires lots of communication. We will strive to keep you informed about PPMC.

There is a wealth of experience in PPMC and our collective efforts at solving problems and creating opportunities will provide superior solutions. Please contact me or other board members with concerns, and suggestions.

You can reach me in many ways:

852 Paradise Park  
 Santa Cruz, CA 95060-7012  
 PPMC Box 161  
[impersol@cruzio.com](mailto:impersol@cruzio.com)  
 831-471-2314



**Chuck Buchanan**  
 President, Board of Directors

## Third Degree Performed in the PPMC Social Hall

On Monday evening, July 8, the officers of Santa Cruz-San Lorenzo Lodge #38 and Confidence Lodge #110 joined together to put on a Third Degree in the Paradise Park Social Hall for Brother Tony Molfino.

### Legacy of Masonry

Tony is the son of PPMC owners **Eugene and Cheryl Molfino** (Royal Arch Drive), the grandson of **Don and Shirley Moore** (York Drive), and the nephew of **Bob Morgan** (Knight Templar).

On the sidelines were many of our Paradise Park residents who turned out to see this rare event. Comments were heard that since such good interest was shown by PPMC residents, future degrees might be conducted there.

### Masonic Tools

Many of the Masonic tools are already available in the Social Hall for such degrees, but the aprons and some of the other implements were brought in from the local lodges.

Tony's family provided refreshments after the degree, and presented him with an antique Masonic pin that had been worn by his great-great grandfather, **George A. Morgan**, who had been the Secretary of Santa Cruz #38.

Tony is the 5th generation of Masonry in his family.

## In Remembrance



### Marie Peterson

246 Washington Avenue  
 Paradise Park  
 entered eternal rest  
 on June 5, 2002



## 2002-3 PPMC Board of Directors

### President:

*Chuck Buchanan*  
 e-mail: [impersol@cruzio.com](mailto:impersol@cruzio.com)  
 Park Phone: 471-2314

### Vice President:

*Tod Likins*  
 e-mail: [trlikins@cruzio.com](mailto:trlikins@cruzio.com)  
 Park Phone: 423-9512

### Secretary:

*Bill Eckard*  
 e-mail:  
 Park Phone: 458-2070

### Treasurer:

*Barbara Monti*  
 e-mail:  
 Park Phone:

### Recreation Director:

*Fred Dunn-Ruiz*  
 e-mail: [dunnruiz@hotmail.com](mailto:dunnruiz@hotmail.com)  
 Park Phone: 426-1072

### Park Manager:

*Jack McHugh*  
 e-mail:  
[manager@paradisepark.org](mailto:manager@paradisepark.org)  
 Office Phone: 423-1530



## From Manager Jack... (continued)

**UTES**, so don't panic if the light turns red right as you approach — a green light is just three short minutes away.

### Timber May be Falling!

Also, just a safety note. If you have attended the Board meeting lately, you will know that the Park has hired a "Registered Forester" to make recommendations as to the disposition of many trees in and around the Park.



Many trees are slated for removal and some just trimmed — but in any event, if you are near the ar-

reas where tree work is being conducted, **PLEASE BE CAREFUL**. While we will make every attempt to inform Members of where work is happening, the fact is that there may be several trees coming down at the same time in different locations, so as you wander around the Park, be aware of what is happening around you.

That's about it from me this month. I'll do my best to keep you up to date on Park happenings as they unfold. Til next month then — Bye!

**Jack McHugh**  
Park Manager

## Park Newsletter Subscriptions Available

Do you have an Associate, Alternate Associate, relatives, or friends who would like to receive the *Paradise Park Gazette*?

For a year's subscription, just send a check for \$15 to Paradise Park Masonic Club, 211 Paradise Park, Santa Cruz, CA 95060-7003.

Be sure to include the name and address where the *Gazette* should be mailed.



*Paid Advertisement*

## FOR SALE

Section 6 — 188 St. Bernard  
Seller: Malcolm Hotchkiss

2 bedroom, 2 bath and den completely remodeled and modernized home in a great sunny location with lots of decks.

One-car garage with extra parking (a real premium in Paradise Park).

This home has it all — new windows, new insulation, new appliances, central heat, fireplace, hot tub in a wonderful back yard.

Freshly painted inside and out.

**\$199,500.00.**

Call Owner at 429-8627  
or Don Schmidt at 458-0663 to see.

## First Annual Quilt Raffle

to benefit the  
Paradise Park Masonic Club  
**Recreation Fund**

This quilt can be viewed  
in the Park Office  
and is to be awarded  
to the winner on

**September 1, 2002**

\$5.00 donation per ticket  
\$20 donation for 5 tickets

Tickets are available  
in the Park Office.

Quilt hand-made and quilted  
by the

**Paradise Park Quilters**



## July's Bird of the Month: The Swainson's Thrush

### The Sounds of Summer

The Swainson's Thrush is going to be harder to spot than most of the previous birds we've featured, but it is very much a part of summer. The lesson here is that sometimes knowing the calls will help you find and/or identify a bird.

When we hear the Swainson's Thrush in the Park, we know that summer has arrived. The sound of their call brings to my mind the word "ethereal."

### Bird Songs

The song is a rolling series of melodious, rapid flute-like notes, ascending up the scale. The resonant, haunting song has a fixed and characteristic pattern you will soon learn to identify. The bird can vary the song's volume at will, singing *sotto voce* to give the illusion that it is still far away even as you approach.



### A Shy Bird

I've spent a good deal of time describing their song because Swainson's Thrushes are shy birds

of dense undergrowth that are more readily detected by their sounds than by sight.

Their habitat is willow thickets, river woods, and forest undergrowth. They stick to the dense areas and that makes them hard to see. We have chased after many a call and seen only a few of them.

### Plain but Beautiful

The Swainson's Thrush is a fairly plain-looking bird. Your best



chance of finding it, as I've said, is to hear them first. At about 7" they

are smaller than robins which are also in the Thrush family. They are a spotted thrush that is uniformly brown above with a conspicuous buffy eye-ring and buffy cheeks and a spotted breast. Don't confuse them with a Hermit Thrush which looks similar, but has a reddish tail.

The Santa Cruz Bird Club lists them as common in spring and summer. So follow their call and it will at least take you on a nice walk. You might even be lucky enough to spot one in the forest, but don't get frustrated...just listen and feel lucky that we get to enjoy their enchanting song.

Happy Birding!  
**Judy and Mark McEuen**

## Paradise Park Anthem

(courtesy of Barbara Brown)

I ran into an old visitor of Paradise Park recently who sent me the "Paradise Park Song" which her cousin Dr. Ernest Simard, currently of Pacific Grove, had composed a very long time ago in response to a request of the members to come up with one. Her name is Mrs. Verna Marie Rembold, nee Stanley, and she remembers crossing back and forth over the bridge in the 1930s. Her aunt and uncle, Mr. and Mrs. Ernest Simard of Section 4, were the Paradise Park Members she came to visit; they had won their lot in the first Paradise Park auction.

This is the song which she still remembered and which I thought might be fun to put into the *Gazette* — it's sung to the *UCB/Cal Fight Song* tune:

Paradise is the place for me  
Beneath the Redwood trees.  
The sun shines bright  
And cares are light  
And no one sleeps till broad daylight.  
The river runs along  
To the tune of a happy song.  
Hurrah! Hurrah! for Paradise  
Where friendships always last for life!



## PPMC Membership Applications Pending

<u>Applicant</u>	<u>Date posted</u>	<u>Member</u>	<u>Allotment</u>
<u>MEMBER CANDIDATE</u>		<u>SELLER</u>	
<u>ASSOCIATE MEMBER</u>		<u>MEMBER</u>	
Shara Guerrette	5/28/02	Kirk J. Stangeland	193 St. Bernard Street
Dawn L. Keeton	3/22/02	James M. Keeton	591 Keystone Way
Peter R. Lasell	2/13/02	William W. Scherer	648 St. Augustine
Cabot B. Caldwell	4/25/00	Sandra B. Caldwell	459 York Avenue
<u>A.I.T. ASSOCIATE MEMBER</u>		<u>MEMBER</u>	
Jana Lamarque	5/16/02	Robert E. Eddy	118A Keystone Way
Susan Sharp	4/29/02	Charlsie M. Harris	133 St. Alban Street
Kelly Greer	2/12/02	George Jean, Jr.	212 Keystone Way
Patricia Anne Lopez	2/01/02	Elaine M. Zollner	130 Keystone Way
David James Campbell	9/18/99	Le Osa Corum	701 St. John's Avenue
Janice L. Berkowitz	6/16/98	William Berkowitz	295 The Royal Arch

## Paradise Park Golf Tournament

**When:** **Friday, August 23, 2002** — First group starts at 9:00 a.m.  
*Only 40 golfers may participate.*

**Where:** Valley Gardens Golf Course (9-hole play)  
 263 Mt. Hermon Road, Scotts Valley

**Fee:** \$15 per player — Greens fee. There will be prizes, trophies, and a free soft drink at Valley Gardens Golf Course, immediately following play. (No lunch will be provided this year.) All fees must be prepaid and attached to the sign-up tear-off on the bottom of this page.  
 Please make checks payable to **PARADISE PARK RECREATION FUND** and mail or take to the Paradise Park Office,  
 211 Paradise Park, Santa Cruz, CA 95060-7003



**Questions? Call Cappy at 831-426-1649**

Your Name \_\_\_\_\_

Your Address \_\_\_\_\_ Phone # \_\_\_\_\_

Other players in your foursome (Include fees for each): \_\_\_\_\_

\_\_\_\_\_

**NO. OF GOLFERS X \$15 = \$ \_\_\_\_\_**

P A R A D I S E P A R K M A S O N I C C L U B

SUMMER CALENDAR OF PARADISE PARK EVENTS

MONTH	DATE	EVENT	TIME	Venue	MEMBER/Chair	July
JULY	1-Mon.	Knittin' Kittens	12:30 - 4:30	Small Social Hall	Pat Rundell	
	2-Tue.	Coffee	9-11am	Small Social Hall	J. Wahl/M. Todd	
	2-Tue.	Sewing w/Shari Keller	7-10pm	Small Social Hall	Shari Keller	
	3-Wed.	Men's Club	10am-2pm	Small Social Hall	Ted Keller	
	4-Thu.	<b>OFFICE CLOSED - Fourth of July Observance</b>				
	4-Thu.	<b>ALL WHEELS PARADE</b>	<b>1pm</b>	Office Parking Lot	C. Molfino	
	6-Sat.	Rainbow Overnight		Large Social Hall	J. Bemis	
	6-Sat.	HotDog/PotLuck	5:30pm	Picnic Grounds	Host Needed	
	7-Sun.	Rainbow Pancake Breakfast		Large Social Hall	J. Bemis	
	7-Sun.	Santa Cruz Shrine Club	All Day	Picnic Grounds	C. Christenson	
	8-Mon.	Soquel/Pajaro Lodge Degree	11am - 11pm	Large Social Hall	C. Almanza	
	9-Tue.	Coffee	9-11am	Small Social Hall	J. Wahl/M. Todd	
	9-Tue.	Sewing w/Shari Keller	7-10pm	Small Social Hall	Shari Keller	
	10-Wed.	Recreation/Activities Cmt.	7-8:30pm	Small Social Hall	F. Dunn-Ruiz	
	10-Wed.	Bingo	6:30pm	Large Social Hall	Yvonne Jones	
	11-Thu.	Tole Painting	1-5pm	Small Social Hall	Alcinda Walters	
	13-19	<b>Rummage Sale Set-Up - Helpers Needed</b>				
	13-Sat.	HotDog/PotLuck	5:30pm	Picnic Grounds	Lang/McHugh	
	14-Sun.	Car Club	8am - 6pm	Picnic Grounds	L. Ames	
	19-Fri.	<b>Rummage Sale - Preview Night</b>	<b>6-9pm</b>	Social Hall	Shari Keller	
	20-Sat.	<b>BOD Meeting</b>	<b>8am</b>	Conference Room	C. Buchanan	
	20-Sat.	<b>Rummage Sale</b>	<b>8am-4pm?</b>	Social Hall	Shari Keller	
	20-Sat.	Charity/Jarman Masonic Lodge Picnic	12-4pm	Picnic Grounds	B. Morgan	
	20-Sat.	HotDog/PotLuck	5:30pm	Picnic Grounds	R. Little/P. Rundell	
	21-Sun.	<b>Rummage Sale</b>	<b>8am-4pm?</b>	Social Hall	Shari Keller	
	21-Sun.	Soquel/Pajaro Lodge # 110 Annual Picnic	11-3	Picnic Grounds	B. Uber	
	21-27	<b>Rummage Sale Cleanup - Helpers Needed</b>				
	27-Sat.	Ziegenfuss Family Reunion	10am - 3pm	Picnic Grounds	E. Smith	
	27-Sat.	HotDog/PotLuck	5:30pm	Picnic Grounds	J. & N. Clark	
	28-Sun.	Amaranth Group Picnic	11am - 3pm	Picnic Grounds	O. Ward	
	30-Tue.	Coffee	9-11am	Small Social Hall	J. Wahl/M. Todd	
	30-Tue.	Sewing w/Shari Keller	7-10pm	Small Social Hall	S. Keller	

AUGUST	1-Thu.	Tole Painting	1-5pm	Small Social Hall	A. Walters	
	3-Sat.	Birthday Party	10am-4pm	Picnic Grounds	J. Morgan	
	3-Sat.	HotDog/PotLuck	5:30pm	Picnic Grounds	D & C Fisher/Eneboe	
	5-Mon.	Knittin' Kittens	12:30 - 4:30	Small Social Hall	Pat Rundell	
	6-Tue.	Coffee	9-11am	Small Social Hall	J. Wahl/M. Todd	
	6-Tue.	Sewing w/Shari Keller	7-10pm	Small Social Hall	Shari Keller	
	7-Wed.	<b>Men's Club - Grand Master's Visit</b>	10am-2pm	Small Social Hall	Ted Keller	
	8-Thu.	Tole Painting	1-5pm	Small Social Hall	Alcinda Walters	
	10-Sat.	Lobster Feed	1:00pm	Picnic Grounds	J. Clark/J. Wilson	
	10-Sat.	HotDog/PotLuck	5:30pm	Picnic Grounds	<b>Host Needed</b>	
	13-Tue.	Coffee	9-11am	Small Social Hall	J. Wahl/M. Todd	
	13-Tue.	Sewing w/Shari Keller	7-10pm	Small Social Hall	Shari Keller	
	14-Wed.	Recreation/Activities Cmt.	7-8:30pm	Small Social Hall	F. Dunn-Ruiz	
	15-Thu.	Tole Painting	1-5pm	Small Social Hall	Alcinda Walters	
	17-Sat.	Boy Scout Troop #807 - Annual Planning Mtg.		Picnic Grounds	S. Names	
	17-Sat.	HotDog/PotLuck	5:30pm	Picnic Grounds	<b>Host Needed</b>	
	20-Tue.	Coffee	9-11am	Small Social Hall	W. Vinson/M. Wells	
	20-Tue.	<b>NO Sewing w/Shari Keller</b>				
	21-Wed.	Bingo	6:30pm	Large Social Hall	Yvonne Jones	
	22-Thu.	Tole Painting	1-5pm	Small Social Hall	Alcinda Walters	
	23-Thu.	<b>Golf Tournament</b>		C. Huffman		
	24-Sat.	<b>Quacker Derby</b>	<b>11am</b>	Middle Beach	B. Sand/B. Biendle	
	24-Sat.	<b>Section Parties</b>	<b>5:00? - ???</b>	various	various	
	27-Tue.	Coffee	9-11am	Small Social Hall	W. Vinson/M. Wells	
	27-Thu.	Sewing w/Shari Keller	7-10pm	Small Social Hall	Shari Keller	

## SUMMER CALENDAR OF PARADISE PARK EVENTS

29-Thu.	Tole Painting	1-5pm	Small Social Hall	Alcinda Walters
31-Sat.	Labor Day Activities		Parkwide	various
31-Sat.	Labor Day Dance	8-12pm	Social Hall	L&K Ames
31-Sat.	HotDog/PotLuck	5:30pm	Picnic Grounds	Host Needed
<b>SEPT</b>			<b>Parkwide</b>	<b>various</b>
1-Sun.	Labor Day Activities			
2-Mon.	Labor Day Holiday - Office Closed			
3-Tue.	Coffee	9-11am	Small Social Hall	J. Wahl/M. Todd
3-Tue.	Sewing w/Shari Keller	7-10pm	Small Social Hall	Shari Keller
4-Wed.	Men's Club	10am-2pm	Small Social Hall	Ted Keller
5-Thu.	Tole Painting	1-5pm	Small Social Hall	Alcinda Walters
7-Sat.	Priest/Scribner	4-8pm (tentative)	Picnic Grounds	Priest/Scribner
7-Sat.	HotDog/PotLuck	5:30pm	Picnic Grounds	Host Needed
9-Mon.	Knittin' Kittens	12:30 - 4:30	Small Social Hall	Pat Rundell
10-Tue.	Coffee	9-11am	Small Social Hall	J. Wahl/M. Todd
10-Tue.	Sewing w/Shari Keller	7-10pm	Small Social Hall	Shari Keller
11-Wed.	Recreation/Activities Cmt.	7-8:30pm	Small Social Hall	F. Dunn-Ruiz
12-Thu.	Tole Painting	1-5pm	Small Social Hall	Alcinda Walters
14-Sat.	B. Morgan Family BBQ	2-4pm	Picnic Grounds	B. Morgan
14-Sat.	Family Birthday Party	(tentative)	Large Social Hall	C. Almanza
14-Sat.	Last HotDog/PotLuck	5:30pm	Picnic Grounds	Host Needed
17-Tue.	Coffee	9-11am	Small Social Hall	J. Wahl/M. Todd
17-Tue.	NO Sewing w/Shari			
18-Wed.	Bingo	6:30pm	Large Social Hall	Yvonne Jones
19-Thu.	Tole Painting	1-5pm	Small Social Hall	Alcinda Walters
20-Fri.	Boss's 50th - Setup		Large Social Hall	B. McHugh
21-Sat.	Boss's 50th - Party Time		Large Social Hall	B. McHugh
22-Sun.	Boss's 50th - Cleanup		Large Social Hall	B. McHugh
24-Tue.	Coffee	9-11am	Small Social Hall	J. Wahl/M. Todd
24-Tue.	Sewing w/Shari Keller	7-10pm	Small Social Hall	Shari Keller
26-Thu.	Tole Painting	1-5pm	Small Social Hall	Alcinda Walters

### Something New at Picnic Playground

(by Barbara A. Monti)

What do you get when you take lots of wood out of several boxes along with lots of screws, nuts, bolts, screwdrivers, hammers (aka "adjusters") and some PPMC volunteers? Well, in this case, you get a fantastic new piece of playground equipment for our picnic grounds.

On June 22, volunteers started arriving at 9:00 a.m., and by 4:30 p.m. the equipment was up and completely assembled. Many thanks to our volunteers who so graciously gave up their Saturday

so youngsters (ages 3 - 11) would have a new piece of playground equipment at the picnic grounds.

Volunteers included Terry and Carol Feist, Gabriella Little, Dick and Connie Fisher, Bill Eckard, Karen Eneboe, Rod and Barbara Monti, Ray Hoffman, Lou Bernard and Joe Storment.

If you didn't get a chance to see it at the annual picnic, then please be

... and only one small bag of nuts and bolts left over!

sure to take a look when you are walking around the park. The old adage, "Many hands make light the work..." was definitely at work that day. Volunteers are always welcome, and hopefully we'll see many more projects happen in the year to come.



## Knittin' Kittens

Hosted by Pat Rundell

First Mondays of the Month

**August 5**

**11:30 a.m.**

Small Social Hall



**COME JOIN US**

**AT**

**BINGO!**

**6:30 p.m.**

**at the Social Hall**

**3rd Wednesday**

**July 17**

Donations for prizes are always welcome.

Yvonne Jones 427-2346

Pat Rundell 427-9360

Those 18 and under must be accompanied by an adult.

### Advertising Rates for Paradise Park Gazette

\$25 for business card-size one time;

\$50 for 1/4 page one time;

\$100 full page one time

## Search for Paradise Park Historical Markers

If you know where others are located, please contact Virginia Williams and I will highlight them in this newsletter in future editions.

- PPMC #1-Yew Trees
- PPMC #2-Washington Walkway
- PPMC #3-Power House #2
- PPMC #5-Power House #1
- PPMC #6-Eagle Creek
- PPMC #10-Wheel House
- PPMC #11-Dog House

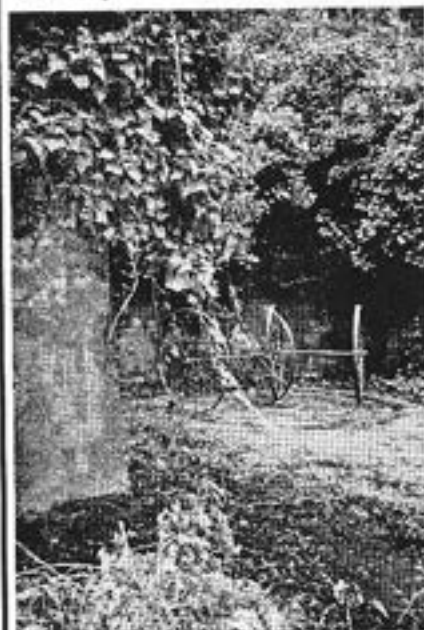
### Paradise Park Historical Marker #10 Wheel House

*(Located on York Avenue — almost completely overgrown by vines.)*

These walls are all that remain of a building called the Wheel House on which the first step was taken in the manufacture of black powder. The roof and fourth wall of the building were temporary construction so that, in the event of explosion, they would give way easily and release the force of the blast upward and out toward the hill. Many eucalyptus trees had been planted nearby to help contain the impact of the blast.

Though explosions were frequent, seldom was anyone hurt because the operator was housed at a safe distance in a small blast-proof building. It was there that he threw the switch that started the process and there he remained, until it was completed about an hour and a half later.

The wheels that you see in the picture revolved in a cast iron kettle while mixing the three ingredients — pulverized charcoal, sulphur and nitrates.



# L•E•T•T•E•R•S TO THE EDITOR

## LETTERS POLICY

The *Paradise Park Gazette* welcomes your letters to the editor. Letters should be short — no more than 250 words. Letters longer than that are subject to cutting, or they may not be published at all.

We do not accept anonymous letters. Letter-writers should include their name as well as their Paradise Park street address and mail address.

You can e-mail your letters to the editor: [virginia@wlmsburg.org](mailto:virginia@wlmsburg.org) or mail them to her at 488 Paradise Park.

*Deadline for each issue is the Friday following the Board meeting.*

## Recycle Buckets

I suggest a note be put in the *Paradise Park Gazette* encouraging members to store their recycle buckets out of sight between recycle pickup days.



This small effort will help maintain the natural beauty of Paradise Park.

**Eric Doberenz**  
466 York Avenue  
25 Paradise Park

## Photo History of Paradise Park

The Historical Committee hopes you enjoy the pictures in the Small Social Hall. Many thanks to **John Drew** for furnishing the frames and mounting them together with **Barry Brown's** help. Then, **Joanne Nelson, Barry Bown, Larry Gilliland,** and **Bob Biendle** got together and mounted them on the wall. More to come we hope!

Thank you.

**Bob Biendle**  
Chairman, Historical Committee  
464 York Avenue  
6 Paradise Park

## My Point of View...

I pledge allegiance  
to the flag of the  
United States of America  
and to the Republic  
for which it stands;  
one nation, *under God,*  
indivisible  
with liberty and justice  
for all.



'Nuff said.

**Virginia Williams**  
PPG Editor



*Paid Advertisement*

**Advertisement  
pulled at press  
time.**



## For Sale By Member

Member's improvements offered for sale as of July 9, 2002. All allotment use privileges and Membership are subject to the approval of the Board of Directors.

### IMPORTANT NOTICE

The sellers solely provide the descriptions of improvements for sale. Such information is not verified or checked for accuracy by Paradise Park Masonic Club, Inc. The Club does not warrant, and disclaims any responsibility for, the accuracy, truthfulness or completeness of any information provided. All questions about allotment improvements should be addressed solely to the seller.

ADDRESS	MEMBER	PRICE	DESCRIPTION
<b>SECTION 1</b>			
462 York Ave.	Patricia Herzog 458-9841	\$189,500  MAKE OFFER	Lovely newer home. Sunny lot w/bright interior. Tastefully decorated, 2 BR, 2 BA, 1,100 sq. ft. fully insulated w/forced air furnace plus gas log stove, Jennair range; island in kitchen; full attic, walk-in closet in MB, 1 car garage; large deck and side brick patio. Includes all appliances and some furniture.
540 Council Street	Ken Nagel 408/984-8839 or 408/489-9126	\$110,000 SALE PENDING	1 BA, 2 BR, 2 allotments =3,125 sq ft, 1,000 sq ft improvements, including 400 sq ft separate garage/work area, upgraded bathroom, refrigerator, stove, & ALL furniture & furnishings included, TAD's paid thru Dec 2002. Great Get-A-Way!
<b>SECTION 2</b>			
378 Hiram Road	Margaret I. White c/o Brian de Diego 831/689-7434	\$110,000	House 550 sq. ft., 1 BA, 1 BR; Guest House 150 sq. ft., full bath/tub, washer & dryer, wash tub; 1-car carport; includes stove, refrigerator, washer/dryer, new water heater, most furniture; Allotment 3,667 sq. ft.
279 Keystone Way  Open House Every Day 10AM to 5PM  Please enter through Rear Kitchen Door	Cal DeVecchis 1-360-681-0515 OPEN-MINDED TO ANY OFFER Before Spr/Sum HomeBuying Frenzy Begins	\$219,000 CREATIVE FINANCING AVAILABLE AT 5% INTEREST UP TO 7 YRS	First! most sunshine; completely upgraded household. Gardener's/Bird watcher's delight w/privacy. 3 BR, 1 BA, delightful kitchen & living rm. New deck area, winterized 10' x 13' laundry rm. Study & computer area. One BR is detached 13/8 x 9/8 cottage. Room for 3 cars. All modern appliances included, & any modern furniture of your choice. New modern fireplace, roofing, sliding glass door; add'l storage area under cottage & in front of laundry area. I wish also to include our family's gratefulness for the best neighbors throughout the years.
280 Keystone Way	Jason Morgan 831/420-1686 Please Call for Appt.	\$127,000 SOME FINANCE AVAILABLE	2 allotments; sunny location; 2 BR, 1 BA; 2-story w/room for expansion; lg 2 car carport; engineered foundation 8 ft. deep; plumbing/wiring approx. 6 yrs old; 2 lg decks overlooking river & covered bridge; MUST SEE!!! ; TADS paid 'til December 2002.
364 Eastern Star	Jeanne Jelcick 831/426-7666 Call for Appt./Info.	\$285,000	Cute little 4BR + sleeping loft or 2BR + office + den. Upgraded septic & electric. Modern kitchen, stack washer/dryer. Good sun & great privacy w/huge beautifully landscaped allotment.
<b>SECTION 3</b>			
<b>SECTION 4</b>			
678 St. Paul Street	C. Sonnichsen Deke Sonnichsen 650/326-7679	\$65,000	Cabin on Eagle Creek, 3 BR, 2 BA, large kitchen and large living room, dining area, electric floor heating. Appliances included: Refrigerator, gas range, and turkey roaster. Furnishings include Beds, chairs, and sofas.
<b>SECTION 5</b>			
139 St. Alban St.	Scott Snyder  429-2079	\$173,800 or best offer SALE PENDING	3 BR, 2 BA, 1,763 sq. ft., Home/Improvement on 9,600 sq. ft. allotment. Lots of space, Lg Master bedroom w/Bath, Indoor Laundry Room, Vaulted Ceilings, 2 lg Backyards w/BOD approved fence, lg private deck, attached 1 car garage w/ample parking around home, 2 separate phone & Cable Lines, New Exterior Paint. Fresh Interior Paint & Carpets Cleaned at Close of Sale. Jenair stove, 2 wood stoves, washer & dryer included. NEW ROOF TO BE INSTALLED Dec. 1, 2001. TAD's paid until April 1, 2002.
170 St. Bernard St.	Hazel Kindwall Carolyn Unger 469-9197	\$285,000	Sunny lot, 2 BR, 1 1/2 BA, no road noise, no flood danger, garage parking, and spaces on both sides, corner lot. Appliances include: oven range, some furniture, drapes.
104 Keystone Way	Mary Etta Baldrige 559/659-2683	\$215,000	2BA, 2BR, 4650 sq ft allotment, 1383 sq ft improvements, auto sprinklers/drip front & back, carport, 2 skylights, propane heat/water heater, modernized & renovated interior, plenty of sunshine, includes stove/microwave, dishwasher, disposal, refrigerator.
115 Keystone Way	Lucille Avery For appt. call Cyndy Crogan 831/426-2756	\$225,000	Spacious Ranch Style Home; lg. 14' X 24' Lv. Rm. W/open beam ceiling, brick fireplace & picture windows; upgraded bathroom; carport, workshop/shed & finished room; redwood deck & surrounding concrete walkway; AS IS; refrigerator, stove, washer/dryer included.
129 Keystone Way	Gordon Crafts 423-3228	\$350,000	Large 2 BR, 1 1/2 BA, location in front of Park, unhindered view of river and forest, improvement approx. 1,600 sq. ft., central gas heating, two phone lines, new roof, storage shed in carport, in and out driveway, ample parking. Room for expansion. Furnishings include: 1 MAC computer and desk.
189 St. Bernard St.	Miriam Kourik 831/426-8224	\$235,000	Split level home, 2 BR, 1 1/2 BA, new septic tank, new roof; sunny with nice yard; allotment located in front of the Park.

# 2ND ANNUAL NEW

# ISLAND CLAM BAKE

1-1/4 lb. Fresh Maine Lobster or New York Steak

## \$25 PER PERSON

## SATURDAY, AUGUST 10, 2002

### 1:00 p.m. at the Picnic Grounds

*No reservations after August 5th*

See Karen in the Park Office  
or call (831) 43-1530 for tickets.

Meal includes:  
steamed clams,  
mussels,  
corn on the cobb,  
cole slaw,  
bread, wine and  
coffee



JULY 2002 — Page 12

from The Advocate's Website.

PARADISE PARK  
MASONIC CLUB  
211 Paradise Park  
Santa Cruz, CA 95060-7003  
831-423-1530 FAX 831-423-2806