

PARADISE PARK

G A Z E T T E

From Manager Jack...

Yahoo! Summer has finally made it. With all the rain we have had, I was beginning to think for a little while that we were going to skip right over the warm weather.

Getting Ready for Summer

May was a pretty busy month. The crew has worked really hard to get the Park looking good and ready for the Memorial Day weekend activities. We repainted all the road markings and added a few new ones.

New Stop Sign

The most obvious additional marking is the new "STOP" sign located across from Norris & Imogene Stone's house at the bottom of "Cardiac Hill." On several occasions I have watched cars make that turn and head up the hill at a pretty good clip, almost hitting cars that pull out of Hiram or Royal Arch. It is my hope that this might slow traffic down a bit. As far as the rest of the markings, they are pretty much the same as before — we just freshened them up a bit.

100 Tons of Yard Waste

The next area you might notice some change is across from the Picnic Grounds. As you know for

quite some time (long before I got here), Park staff used that area to dump yard clippings picked up from your allotments. The plan worked fine for a while, but it became very apparent that we were beginning to build a mountain. So last month during a "free dump week" being offered by the County of Santa Cruz, we hauled almost 192,000 lbs. (that's right, almost 100 tons) of decomposed yard waste to the dump. But with all the recent rains, the hill was so slick that we couldn't get any more hauled out without fear of the Park's equipment sliding down the hill and getting hung up on the cement wall or pilings — not a good thing.

What to do? George Saam to the rescue. George volunteered his time and the use of his equipment to do in about 30 minutes what the crew worked on for almost three hours with Park equipment and then finally gave up. He removed the cement wall and cement-filled retaining pipes that were left behind from the floods of 1982 when there used to be homes in that area.

I would like to extend a huge thank you to George Saam, who

(continued on page 3)

It's Tod's Turn...

This will be my last opportunity to share with you my perspectives on Paradise Park, and I am going to do just that. I have now finished three years on the Board of Directors — the last two as the Board President — and I think I have a sense of where the Park is.

We're in Better Shape Now

I truly believe that the Park is in better shape than it has been in a long time. We have a competent Park Manager for the first time in many years. We have a legal and operational set of Bylaws for the first time in many, many years. Our Rules and Procedures are clear and unambiguous and, for the first time, changeable by the membership.

(continued on page 2)

Paradise Park Gazette

The *Paradise Park Gazette* is a monthly publication of the Paradise Park Masonic Club. Send your articles to Virginia Williams, Editor, 488 Paradise Park, Santa Cruz, CA 95060, phone or message: 423-8904. You may also e-mail your articles to me at virginia@wllmsburg.org. Submission deadline is the Friday following the Board Meeting. Distribution will then be the first few days of the following month.



It's Tod's Turn... *(continued from page 1)*

We have sold our Castle property and have a \$1,000,000 reserve from which to replace and repair our ancient water system. We have been financially frugal and have lived within our budgets for the past several years, thus creating reserves that have never been so healthy. We have a forestry management plan in place that is beginning to function and we have opened our Board meetings to the membership.

What Should Not Change

Given all those changes, it is still my priority to keep the Park as close as possible to the way it was fifty years ago. I believe our big redwoods should be regarded as sacrosanct, and our roads should be just as natural as the fire departments will allow. I think we must take any and all steps to maintain, and repair when necessary, our extraordinary covered bridge, keeping it as close to the way it was originally built as possible. I think street lights should be minimized and new and remodeled buildings held to a minimum size and a rustic appearance.

More Issues to Address

There are still some other changes that should be considered. For example, there are questions about the equity of our assessments and that probably should be studied. Perhaps the size of the improvement should be considered as well as the size of the allotment. I have no answers but the questions exist.

I also think there are some changes that still must be made. We need to reach a point where we can charge ourselves fees for services used. If we leave refuse and garbage, we should pay for the hauling of it. Each of us should pay for our own water use, just as we pay for our gas, electricity and TV.

A Change of Attitude Needed

There is one more change that really does need to be made...and that is a change in attitude on the part of many of our members. We have a process for governing ourselves. We call it a democracy. Ours is a very inclusive process, and everyone has a chance to participate in it.

If you feel my ideas are all wet, I suggest that you not bitch and moan about what I think, but get off your duff and run for the Board yourself!

Tell the members what you think needs to happen and see if you get the backing to be elected. If you are elected, you will have the chance to work with the other elected Board members to see if your ideas will work. If you are not elected, then sit down and think about the reasons you weren't elected.

If You Don't Run...

But if you don't even run, you have no legitimate basis for complaint, and perhaps you should accept the ideas of those who have stepped forward and been elected.

In Remembrance



Margaret Sullivan

121 Keystone Way
April 30, 2002

Frances Lenz

Member of Charter Family
177 St. Bernard
May 13, 2002

Anne Johnston

Wife of Bill Johnston
472 York Avenue
May 17, 2002

If you think a particular rule or procedure is out of line and the Board disagrees with you, use the process available to you. See if a majority of the membership agrees with you, but don't just carp and complain about whatever has you in a snit. Paradise Park is a unique community, and it is vital to its continued existence that we work together within our democracy and respect the will of the majority within our Bylaws and the laws of the land.

Thanks for letting me serve you.

Tod Likins

President
Board of Directors



From Manager Jack... (continued)

cleared those obstacles out of our way so we can reclaim that area to make it more manageable and hopefully more attractive. Thanks again, George.

Garbage Bag Weight Limits

Now on to a little more boring but necessary topic. For the last few weeks, I have helped with picking up your garbage on Monday mornings. For the most part everyone is following the rules of not putting out bags weighing more than 35 lbs. But I have to say that there are some of you that are not following the rules and it's whatever the bag will hold.

Outside the Park where garbage trucks are used, this would not be so much a problem because you never have to lift the bags very high. But in the Park, it's a very different story. When we begin the route on Mondays, we have to throw the bags up about 5+ feet into the back of the dump truck.

Now let's move ahead about half way through the route when the truck is starting to fill up. Now we have to throw that same bag almost 15 or so feet into the air to get it into the truck. The further into the route we get, the higher we have to throw it.

Wanna Try This Experiment?

If you want to try an experiment, take a 35 lb. sack of sand (I'll get you one if you want to try this) and try to throw it on the roof of your house. Now let's try it with a 50 lb. sack. Now let's do it for four or so hours. Not to mention the extreme displeasure of trying to throw an overweight bag into

the truck and, because it's so heavy, it breaks.

Get the idea? Please, I don't want any of our crew to hurt themselves trying to be heroes, so please! Take it easy loading those bags.

Recycling

Lastly, my favorite subject — recycling. By now everyone in the Park should have received three recycling buckets. If you haven't received yours or if you need or want more buckets, please stop by the Office and I will be happy to get more for you. **Remember: one for glass, one for plastic and one for metal.** You can mix tin and aluminum if you like — we will separate it.

Also, if you are placing **newspaper or cardboard** at the curb for pick-up, please tie it into manageable bundles and we will pick it up for you.

One last thing, (I'm starting to sound like "Columbo"). Many of you have asked me: "When does the crew pick up recycling material?" We begin picking it up Monday afternoon right after we get back from the dump unloading the garbage. As we get more participation from the members and with more families in the Park during the summer months, it may take a little while longer than usual to make our way through the entire Park, but be assured — *it will get picked up.*

Hope you had a great Memorial Day weekend and have a great summer.

Jack McHugh
Park Manager

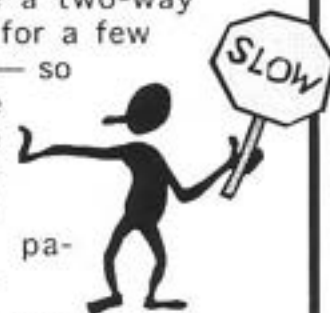
EXIT ROAD ALERT!

The exit road will be closed for about 3 or 4 days at the end of *this month*.

Granite Construction will be seal-coating the Exit Road per the BOD decision at the April meeting. The complete process will take about two days, and then we have to stay off of it for another two days.

I can't pin down Granite on a specific date as to when they're going to start. As soon as I get an exact start date, I will place notices around the Park.

Don't forget — this means the Entrance Road will become a two-way road for a few days — so please be careful and patient.



The traffic lights are on a 3-minute cycle — it just seems to take forever to change.

Thanks for your cooperation!

Jack McHugh
Park Manager



June's Bird of the Month

Black-Headed Grosbeaks

Summer must be coming...the summer residents have migrated back. We get to the park only on weekends, and Memorial Day weekend, the Grosbeaks came to the feeder as soon as we put it up. They belong to the family Fringillidae (isn't that name just fun to say?) which comprises the largest family of North American birds.

Besides being colorful, their most striking feature is their short heavy conical bill...get it...gross beak...which is well-adapted for cracking seeds. They are finches



which makes them seed-eaters, though they

do eat insects and small fruits.

Grosbeaks are 6½ to 7¼ inches in length. Their song resembles a robin's, but it is more musical.

The male is much brighter than the female and young. He has a black head (appropriate considering their name), a rusty orange breast and collar which fades to yellow on the belly, and boldly marked black and white wings. All combined, this makes him a very striking bird. Don't forget that large pinkish white, conical bill. In flight he shows black and white wing and tail patterns and a cinnamon rump.

(continued on page 10)



Paradise Park Masonic Club Summary of the Construction Approval Process: A Guide for Members

The Board of Directors will not review plans until all necessary committee recommendations are on file in the Club Office.

1. Obtain from the Club Office a *Construction Information Package*.
2. Review all materials in the *Package*.
3. Sign the *Member Acceptance* page from the *Remodeling & New Construction Rules*.
4. Submit the signed *Acceptance* page, together with seven sets of construction plans, to the Office.
5. Do plans require tree removal or trimming? If yes, get a copy of the *Tree Rules* and submit a tree removal application to the Office.
6. Do plans require septic system leach lines to go into the street? If yes, sign a *Septic System Maintenance Agreement*.
7. Send a letter to each of your *six closest neighbors* advising them of your project.
8. The Office will send your seven sets of plans, together with the *Member Acceptance*, to the Building & Plans Committee for its review.
9. The Committee will contact you, if necessary. You and the Committee should work together to resolve problems and concerns.
10. After written Committee approval, plans will go the Board of Directors for its approval.
11. After Board approval, your seven plan sets will be stamped, signed and returned to you. You may now apply for *County permits*.
12. Always refer to the *Remodeling & New Construction Rules* for answers to questions about building requirements, contractors and variances.
13. Always check with the *County of Santa Cruz* for answers to questions about permit requirements.

*Copies of the complete
Construction Approval Process Package
are available upon request from the Park Office.*



PPMC Membership Applications Pending

<u>Applicant</u>	<u>Date posted</u>	<u>Member</u>	<u>Allotment</u>
<u>MEMBER CANDIDATE</u>		<u>SELLER</u>	
Luther DeVore, Jr.	4/19/02	Scott Snyder	39 St. Alban Street
Gary Gordon	5/21/01	Irving Gordon	129 Keystone Way
<u>ASSOCIATE MEMBER</u>		<u>MEMBER</u>	
Dawn L. Keeton	3/22/02	James M. Keeton	591 Keystone Way
Peter R. Lasell	2/13/02	William W. Scherer	648 St. Augustine
Cabot B. Caldwell	4/25/00	Sandra B. Caldwell	459 York Avenue
Darlene Huckobey	10/6/99	Darrel Huckobey	562 King Solomon
<u>ALT. ASSOCIATE MEMBER</u>		<u>MEMBER</u>	
Shara Guerrette	5/28/02	Kirk J. Stangeland	193 St. Bernard Street
Jana Lamarque	5/16/02	Robert E. Eddy	118A Keystone Way
Karsen Jones	5/13/02	Darrell Huckobey	562 King Solomon
Susan Sharp	4/29/02	Charlsie M. Harris	133 St. Alban Street
Kelly Greer	2/12/02	George Jean, Jr.	212 Keystone Way
Patricia Anne Lopez	2/01/02	Elaine M. Zollner	130 Keystone Way
Laurie Hayball	7/10/01	Joan Riffe	198 Keystone Way
David James Campbell	9/18/99	Le Osa Corum	701 St. John's Avenue
Janice L. Berkowitz	6/16/98	William Berkowitz	295 The Royal Arch

Important Notice from the Election Committee
concerning the Paradise Park Election:
YOUR VOTE WILL NOT COUNT
UNLESS
you have a current, signed dues receipt
from your Masonic Lodge or Eastern Star Chapter
on file in the Paradise Park Office.

Ballots must be in Paradise Park Masonic Club office
by June 29, 2002, 4:00 p.m.



SUMMER CALENDAR OF PARADISE PARK EVENTS

<u>MONTH/DATE</u>	<u>EVENT</u>	<u>TIME</u>	<u>VENUE</u>	<u>MEMBER/CHAIR</u>	
June	1-Sat. TAPS Picnic	10am-6pm	Picnic Grounds	C. Ames	
	2-Sun. Rainbow Pancake Breakfast	9am - 1pm	Social Hall	Diana Cook	
	3-Mon. Knittin' Kittens	12:30 - 4:30	Small Social Hall	Pat Rundell	
	4-Tue. Coffee	9-11am	Small Social Hall	J. Wahl/M. Todd	
	5-Wed. Men's Club	10am-2pm	Small Social Hall	Ted Keller	
	6-Wed. Senior Strollers	9am-12:30pm	Picnic Grounds	Y. Kirby	
	6-Thu. Sewing w/Shari Keller	7-10pm	Small Social Hall	Shari Keller	
	8-Sat. Slumber Party Sat.	4pm - Sun, 12pm	Large Social Hall	L. Stiefelmaier	
	9-Sun. Family Party	12-7pm	Picnic Grounds	K. Ames	
	11-Tue. Coffee	9-11am	Small Social Hall	J. Wahl/M. Todd	
	12-Wed. Recreation/Activities Cmt.	7-8:30pm	Small Social Hall	Bill Eckard	
	13-Thu. Sewing w/Shari Keller	7-10pm	Small Social Hall	Shari Keller	
	15-Sat. PotLuck	5:30pm	Social Hall	???	
	18-Tue. Coffee	9-11am	Small Social Hall	J. Wahl/M. Todd	
	19-Wed. Mended Hearts	11:30am - 2:30pm	Picnic Grounds	L. Schillig	
	19-Wed. Bingo	6:30pm	Large Social Hall	Yvonne Jones	
	20-Thu. Sewing w/Shari Keller	7-10pm	Small Social Hall	Shari Keller	
	25-Tue. Coffee	9-11am	Small Social Hall	J. Wahl/M. Todd	
	27-Thu. Sewing w/Shari Keller	7-10pm	Small Social Hall	Shari Keller	
	29-Sat. BOD Meeting	9-12am	Small Social Hall	Tod Likins	
	29-Sat. Annual Meeting	7-9pm	Large Social Hall	Tod Likins	
	30-Sun. BOD Annual Picnic	11-2pm	Picnic Grounds	New BOD	
	July	1-Mon. Knittin' Kittens	12:30 - 4:30	Small Social Hall	Pat Rundell
		2-Tue. Coffee	9-11am	Small Social Hall	J. Wahl/M. Todd
		2-Tue. Sewing w/Shari Keller	7-10pm	Small Social Hall	Shari Keller
		3-Wed. Men's Club	10am-2pm	Small Social Hall	Ted Keller
		4-Thu. OFFICE CLOSED - Fourth of July Observance			
		6-Sat. Rainbow Overnight		Large Social Hall	J. Bemis
		6-Sat. HotDog/PotLuck	5:30pm	Picnic Grounds	Host Needed
		7-Sun. Rainbow Pancake Breakfast		Large Social Hall	J. Bemis
7-Sun. Santa Cruz Shrine Club		All Day	Picnic Grounds	C. Christenson	
9-Tue. Coffee		9-11am	Small Social Hall	J. Wahl/M. Todd	
9-Tue. Sewing w/Shari Keller		7-10pm	Small Social Hall	Shari Keller	
10-Wed. Recreation/Activities Cmt.		7-8:30pm	Small Social Hall	Bill Eckard	
10-Wed. Bingo		6:30pm	Large Social Hall	Yvonne Jones	
11-Thu. Tole Painting		1-5pm	Small Social Hall	Alcinda Walters	
13-19 Rummage Sale Set-Up - Helpers Needed			Social Hall	Shari Keller	
13-Sat. HotDog/PotLuck		5:30pm	Picnic Grounds	Host Needed	
14-Sun. Car Club		8am - 6pm	Picnic Grounds	L. Ames	
19-Fri. Rummage Sale - Preview Night		6-9pm?	Social Hall	Shari Keller	
20-Sat. Rummage Sale		8am-4pm?	Social Hall	Shari Keller	
20-Sat. Charity/Jarman Lodge Picnic		12-4pm	Picnic Grounds	B. Morgan	
20-Sat. HotDog/PotLuck		5:30pm	Picnic Grounds	Host Needed	
21-Sun. Rummage Sale		8am-4pm?	Social Hall	Shari Keller	
21-Sun. Soquel/Pajaro Lodge Annual Picnic		11-3	Picnic Grounds	B. Uber	
21-27 Rummage Sale Cleanup - Helpers Needed			Social Hall	Shari Keller	
27-Sat. Ziegenfuss Family Reunion		10am - 3pm	Picnic Grounds	E. Smith	
27-Sat. HotDog/PotLuck		5:30pm	Picnic Grounds	Host Needed	
28-Sun. Amaranth Group Picnic		11am - 3pm	Picnic Grounds	O. Ward	
30-Tue. Coffee		9-11am	Small Social Hall	J. Wahl/M. Todd	
30-Tue. Sewing w/Shari Keller		7-10pm	Small Social Hall	S. Keller	



SPRING/SUMMER CALENDAR OF PARADISE PARK EVENTS

Aug	1-Thu.	Tole Painting	1-5pm	Small Social Hall	A. Walters
	3-Sat.	Birthday Party	10am-4pm	Picnic Grounds	J. Morgan
	3-Sat.	HotDog/PotLuck	5:30pm	Picnic Grounds	Host Needed
	5-Mon.	Knittin' Kittens	12:30 - 4:30	Small Social Hall	Pat Rundell
	6-Tue.	Coffee	9-11am	Small Social Hall	J. Wahl/M. Todd
	6-Tue.	Sewing w/Shari Keller	7-10pm	Small Social Hall	Shari Keller
	7-Wed.	Men's Club/ Grand Master's Visit	10am-2pm	Small Social Hall	Ted Keller
	8-Thu.	Tole Painting	1-5pm	Small Social Hall	Alcinda Walters
	10-Sat.	Lobster Feed	1:00pm	Picnic Grounds	J. Clark/J. Wilson
	10-Sat.	HotDog/PotLuck	5:30pm	Picnic Grounds	Host Needed
	13-Tue.	Coffee	9-11am	Small Social Hall	J. Wahl/M. Todd
	13-Tue.	Sewing w/Shari Keller	7-10pm	Small Social Hall	Shari Keller
	14-Wed.	Recreation/Activities Cmt.	7-8:30pm	Small Social Hall	Bill Eckard
	15-Thu.	Tole Painting	1-5pm	Small Social Hall	Alcinda Walters
	17-Sat.	HotDog/PotLuck	5:30pm	Picnic Grounds	Host Needed
	20-Tue.	Coffee	9-11am	Small Social Hall	W. Vinson/M. Wells
	20-Tue.	NO Sewing w/Shari Keller — CANCELLED			
	21-Wed.	Bingo	6:30pm	Large Social Hall	Yvonne Jones
	22-Thu.	Tole Painting	1-5pm	Small Social Hall	Alcinda Walters
	23-Thu.	Golf Tournament			C. Huffman
	24-Sat.	Quacker Derby	11am	Middle Beach	B. Sand/B. Biendle
	24-Sat.	Section Parties	5:00? - ???	various	various
	27-Tue.	Coffee	9-11am	Small Social Hall	W. Vinson/M. Wells
	27-Thu.	Sewing w/Shari Keller	7-10pm	Small Social Hall	Shari Keller
	29-Thu.	Tole Painting	1-5pm	Small Social Hall	Alcinda Walters
	31-Sat.	Labor Day Activities			
	31-Sat.	Labor Day Dance	8-12pm	Social Hall	L&K Ames
	31-Sat.	HotDog/PotLuck	5:30pm	Picnic Grounds	Host Needed



2002

Paradise Park Masonic Club GOLF TOURNAMENT

Friday, August 23, 2002

Valley Gardens Golf Course

\$15 Greens fees per player

includes soft drink.

This year, no food will be served

Tee times start at 9:00 AM

Limited to 40 players

so sign up early at the office!



Knittin' Kittens

Hosted by Pat Rundell
 First Mondays of the Month
 June 3rd
 July 1st
 11:30 a.m.
 Small Social Hall



COME JOIN US AT BINGO!

6:30 p.m.
 at the Social Hall
 3rd Wednesdays
 June 19

Donations for prizes are always welcome.

Yvonne Jones 427-2346

Pat Rundell 421-9360

Those 18 and under must be accompanied by an adult.

Search for Paradise Park Historical Markers

If you know where others are located, please contact Virginia Williams and I will highlight them in this newsletter in future editions.

- PPMC #1-Yew Trees
- PPMC #2-Washington Walkway
- PPMC #3-Power House #2
- PPMC #5-Power House #1
- PPMC #6-Eagle Creek
- PPMC #10-Wheel House
- PPMC #11-Dog House

Paradise Park Historical Marker #6 Eagle Creek

(Located on Keystone Way in Section 4)

This beautiful little stream is now known as Eagle Creek that once at one time called Powder Mill Creek. For many years, it served the residents of Paradise Park as one of the sources for domestic water supply.

In May of 1952, the bridge that spans the creek collapsed under a truckload of sand. Fortunately, there were no injuries.

In front of you and a bit to the left, there once stood a building where thirteen employees were engaged in the manufacture of an experimental explosive, the

principle ingredient of which was nitro glycerine. The experiment ended in disaster when an explosion demolished the building and claimed the lives of the thirteen men — the most tragic accident in the 50-year history of the Powder Works on this site.

The hill in front of you and a little to the right was, in Powder Mill days, stripped of timber. The powder company erected a flag pole on the summit and "Old Glory" was displayed there daily. Thus the hill became known as Flag Staff Hill.



L·E·T·T·E·R·S TO THE EDITOR

Wheel Chair No Fun!

To All my Friends in Paradise Park:

Thank you very much for all the cards, phone calls, visits and your help that you have given me during this time with my broken ankle!

Milton Jones

802 Paradise Park
106 Keystone Way

Thank You

I wish to thank all my friends and neighbors for the many thoughts and prayers that I've received since learning I had cancer. The good news is that they found it early — no chemo! Radiation for 6 weeks. I have no choice — but I can handle that! God Bless —

Bonnie Hamilton

810 Paradise Park
173 St. Bernard St.

LETTERS POLICY

The *Paradise Park Gazette* welcomes your letters to the editor. Letters should be short — no more than 250 words. Letters longer than that are subject to cutting, or they may not be published at all.

We do not accept anonymous letters. Letter-writers should include their name as well as their Paradise Park street address and mail address.

You can e-mail your letters to the editor: virginia@wlmzburg.org or mail them to her at 488 Paradise Park.

Deadline for each issue is the Friday following the Board meeting.

Election Time

...The president of the Board has made it very clear that our manager answers to him and only to him. I understand that some of us have finally had enough and are ready to be heard, but let's be sure our concerns are focused in the right direction. Ultimately, the Board president has been responsible for Jack's actions. I don't "back Jack" but he's only doing what he is told to do, or what the bylaws allow. Remember, the Board of Directors is elected by us to work for us. There are measures in place to remove Board members if we are dissatisfied with their performance.

It's been stated that the Board is looking for ways to raise money without raising our TADs. To my mind, there is a lot of money to be made by closer supervision of how our money is spent, making sure it is being used judiciously.

Election time is coming. Please think long and hard about who you vote for. The new Board will be responsible for renewing the manager's employment contract, and, if renewed, for monitoring how he spends our money.

Faternally,

Jerry Morgan

103 Paradise Park
343 The Royal Arch

Election Committee

This letter is to inform the president Tod Likins and the members of the Board of Directors how much I resent your recent action in appointing a new Election Board because of "conflict of interest." How ridiculous!

I have worked on the Nominating Committee as well, and believe me, that is a thankless job trying to get people to run for the Board. However, once that slate is set, there is no way anyone can determine the outcome except the voting members of the club.

As a member of the Election Board for the past few years, I can assure

you that the votes were counted carefully and correctly with never a hint of impropriety, and to be summarily dismissed is an insult to our integrity.

It is too bad that this Board did not have the backbone to stand up to the "nay-sayers" and defend those of us who have worked diligently and honestly these past years as members of the Election Board Committee to assure the membership that their votes were counted and counted correctly.

Phyllis A. Green

596 Paradise Park
512 Courtesy Lane



Rainbow is Truly an *International* Masonic Order for Girls

Article submitted by Anna Lind, Supreme Drill Leader,
International Order of the Rainbow for Girls

Brazil Sees a Rainbow

Last August, 2001, my husband Bill and I traveled to Sao Paulo, Brazil, with a group of 20 Rainbow Girls and adults from all over the United States. Our purpose was to start their first Grand Assembly!

They needed to have 10 Assemblies before they could have a Grand Assembly. We were also able to confer the first Grand Cross of Color Degree upon the girls and adults who had earned this highest honor in Rainbow by working to establish Rainbow in Brazil (approximately 4 years). We found friendly people who are proud of their Rainbow Assemblies.

There was a private audience with the Grand Master of Brazil, the first he had given to a group that was not made up of Masons.

The hospitality was outstanding and we found we could communicate even though their language is Portuguese and ours, of course, is English.

The Ritual work took time as it had to be translated for both languages. The Rainbow Girls traveling with us made instant friends with the Rainbow Girls in Brazil.



Aruba-Bound

May 2, 2002, found us again on a Rainbow trip — this time to the island of Aruba where we were to institute the first Rainbow Assembly on the island.

Following Institution, we initiated 44 girls into Rainbow and then installed them into their first offices. The Mother Advisor is a Majority Rainbow Girl from West Virginia and Mr. Juni Oduber was named the first Supreme Deputy. We enjoyed a tour of the island with the new Rainbow Girls in Aruba. They were so happy and excited to have Rainbow, and to be the first island in the

Caribbean to have this Order for Girls. Aruba is known as the "Happy Island" and the girls and adults we met certainly were. This island is part of the Netherlands Antilles group of 3 islands.

As Supreme Drill Leader for the International Order of the Rainbow for Girls, it was a thrill to carry out the work to establish this new Jurisdiction, along with a delegation of 20 from the United States. All 20 had a part in starting Rainbow in Aruba.

Bill & Anna Lind
435 Joppa St.
84 Paradise Park

Recycling Works for the Park!

These are the current categories of recyclables that Park personnel are picking up at curbside. Just place these materials out with your trash for pickup (usually on Mondays):

IN CURBSIDE BUCKETS:

- **Plastic** — items such as milk and juice containers, plastic soda bottles, etc. Look for Recycle #1 AND #2 ONLY on the bottoms of the containers.
- **Tin** — soup, vegetable and other types of tin containers
- **Glass** — jars, wine bottles and so forth. Please separate clear glass from brown/green glass.
- **Aluminum** — soda, beer cans and other assorted beverage containers
- **Newspapers** in securely tied bundles — NOT in plastic or brown paper bags
- **Magazines** securely tied in bundles
- **Corrugated cardboard** broken down flat

By participating in our recycling efforts, YOU are saving the park \$\$\$ in dump fees *besides* saving our environment by not contaminating our landfills with recyclable materials!





**2ND
ANNUAL
NEW ENGLAND
CLAM BAKE**

**1-¼ lb. Fresh Maine Lobster
or New York Steak**

Meal includes:
steamed clams, mussels,
corn on the cobb, cole slaw,
bread, wine and coffee



**\$25 PER PERSON
SATURDAY,
AUGUST 10, 2002**

1:00 p.m. at the Picnic Grounds

No reservations after August 5th
See Karen in the Park Office
or call (831) 43-1530 for tickets.

June's Bird of the Month

(continued from page 4)

The female is a faded version of the male, but instead of a solid black head, she has a faded black and white face pattern. She is largely brownish yellow with fine streaking on the sides and yellowish wing linings you'll see in flight.



The book says they have a light brown wash on the breast, but our females tend to have a yellowish look — especially in the spring.

So put some seeds in your feeder and welcome our feathered summer residents.

Happy Birding!
Judy and Mark McEuen

**2002 PPMC Board
of Directors**

President:
Tod Likins
e-mail: trlikins@cruzio.com
Park Phone: 423-9512

Vice President:
Don Schmidt
e-mail:
Park Phone: 458-0663

Secretary:
Dan Bales
e-mail: dbales@jps.net
Park Phone: 429-8623

Treasurer:
Malcolm Hotchkiss
e-mail:
Park Phone: 429-8627

Recreation Director:
Bill Eckard
e-mail:
Park Phone: 458-2070

Park Manager:
Jack McHugh
e-mail:
manager@paradisepark.org
Office Phone: 423-1530

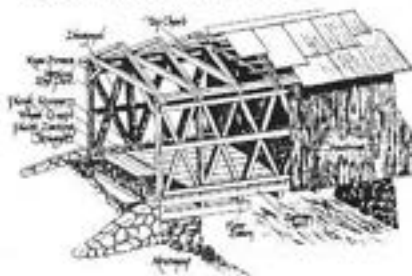


Covered Bridge Recommendations

With thanks to Cyndy Crogan...

April/May 2002

- Read Arnold Graton Report Dated March 22, 2001.
- One 5-ton truck or 2 cars at a time moving slowly — *no more than 5 m.p.h.*
- Clean the bridge twice a year Spring/Fall.
- Make sure all culverts and drains direct water away from the bridge. Upgrade culvert on north west corner.
- Move the 4" water main.
- Remove the outriggers on the south side of the bridge.
- Trim all vegetation at least five feet away from the wood.
- Keep the bridge as dry as possible. Water is not to be used to clean the bridge.
- Treat dry-rot areas with preservatives called out only by restoration specialists.
- Start setting aside funds for the maintenance and repairs that the bridge will require,
- Educate the community regarding the history and care of the covered bridge so that our practice will be adopted by generations to come.



Historical Facts About the Paradise Park Covered Bridge May 2002

- The covered bridge was built by the Pacific Bridge Company for the California Powder Works in 1872.
- At this time, the bridge is 130 years old.
- The Bridge is constructed of Douglas Fir. The trees used for the covered bridge were saplings in the 1600s and 1700s.
- Some of the timbers that make up the chords are over forty feet long.
- This is one of the oldest covered bridges extant in California. It is distinguished from other California covered bridges by its unusual overhanging portal and by the absence of metal tie rods in its truss construction. (This last fact is no longer true.)
- The original abutments were drystackd rocks. The covered bridge only rests on the abutments.
- The bridge is 183 feet long.
- The covered Bridge was used by the Powder Works for 42 years.
- The Park has used the bridge for 78 years.
- There are 8 covered bridges left in California. In 1938 there were at least 30.
- Any covered bridge standing after 100 years is well built.
- Quotes from Arnold Graton:
The Paradise Park Covered Bridge is:
UNIQUE because it is a Warren truss.
UNIQUE because it is in one of the largest states with the fewest covered bridges.
UNIQUE because it is one of the biggest covered bridges left.
UNIQUE because it is one of the closest to the ocean.
UNIQUE because it is privately owned.
And if restored to its original condition, it will also be unique because it will be the longest true Warren truss and the only one of two remaining in the United States.

You are invited to attend an
INFORMATIONAL TEACH-IN
on the Construction and History of the
Paradise Park Covered Bridge

by Cyndy Crogan

Saturday, June 29, 2002 • 2:00 - 4:00 p.m.

beginning at the Social Hall



Summertime Recreation is a Blast!

Summer is here! That's the feeling of your Recreation Committee. Now's the time to dust off and get active.

God-bye Potlucks — Hello Weenie Roasts

This is the last month for the Potlucks, so if you can't make the 15th, you're going to have to wait until September. We begin the weekly weenie roasts on July 6th. The rules are the same as for the potluck. Please bring a dish for six, your own table service, and be prepared to share your humor and winter adventures. It makes for a great time for fellowship, sharing of recipes, and getting to know your neighbors.

New Playground Equipment

Your Recreation Committee is in the process of getting and installing new playground equipment in the Picnic Ground area. We're getting a wooden structure like we have in Section Four near the tennis court. **Craig Little** has offered his assistance in supervising the square and level of the project, but it will be up to us, the members, to put part "B" with part "C" using screw "#3." So please watch for information on the work parties. We'll post it as soon as we know. We'll look your "assistance" whether it's in the form of labor or just as "sidewalk superintendents." It should be an entertaining experience. Come one, come all!

We Worked up an Appetite

As you can see as you walk around the Park, we had a very good workday over the Memorial Day weekend. We fed all that

came, and the entertainment was watching the chefs — **Bob Biendle** and **Frank Conti**. We now know they believe in cremation (there wasn't a hot dog left!). To list everyone that made the event happen would mean I would also leave someone out. So to everyone who helped, we appreciate your effort and because of it, good food was mixed with fellowship.

Replacement Goodies and Ducky Derby

We're also looking into replacing the mat at the Golf Net and repairing the slide at the Office.

Tickets for this year's Ducky Regatta will go on sale around July 4, so start saving your pennies.

Flea Market

Your items not needed or that you wish to "exchange" for other items to be "exchanged" next year should be set aside for this year's Flea Market. Please contact **Shari** or **Ted Keller** (425-2646) prior to bringing the item to the collection site (Office basement).

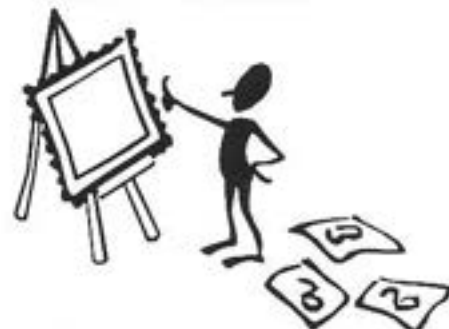
Friday Night Pizza Parties

Look for bulletins giving information about the return of our monthly Friday Night Pizza Parties. (Contact **Gretchen Williams** 423-6043 with assistance).

Golf Tourney and Labor Day Activities

The Annual Golf Tournament is being formulated and will show some changes, so get to the net and start practicing your swing. The Labor Day activities are being planned. We may add a domi-

Kids Crafts!



WHAT: KIDS CRAFTS SESSION

WHEN: SUNDAY, JUNE 16 1-3 P.M.

WHERE: SMALL SOCIAL HALL

WHO: KIDS OF ALL AGES ARE WELCOME.

INVITE YOUR FRIENDS, OLD AND NEW, TOO.

WHY: FOR FUN!

HOSTESS: DIANE BROWN

noes tournament (No, Mr. Biendle — that is *not* a pizza-eating contest!) if there's interest (chairperson needed).

Come to a "Rec" Committee Meeting

Your Recreation Committee meets on the second Wednesday of the month, year-round in the Small Social Hall at 7:00 p.m., so come and see what we have for you and what you can do for us. This is your Park and your smile is what we desire! Until then — "la Buena Vida" my friends!

Your Board Liaison for Food, Fun, Frolic and Fellowship —
Bill Eckard



Office Reminders

Please request that all your guests and relatives receiving mail via your Park mail box include YOUR NAME in their address as follows:

Guest's Name
clo Member's Name
 XXX Paradise Park
 Santa Cruz, CA 95060-700X

or their mail may be "returned to sender."



Happy Birthday, Elizabeth!

Many heartfelt good wishes to my aunt Elizabeth Hall, *charter member*, at 377 Hiram Way, on the occasion of her **100th birthday** on June 20, 2002.

You can read a very nice article written for the *Pleasanton* newspaper a few months back about my aunt:

www.pleasantonweekly.com/thisweek entitled "A Century of Change," Living Memory (February 08, 2002)

Ellen Smith
 339 Royal Arch Rd.

Advertising OK to Appear in Paradise Park Gazette

Got a bike you want to sell?

Can you provide child care?

Are you a seamstress looking for a dress to make for someone else?

Are you a hairdresser looking for new clients?

Then you are looking for a perfect way to reach your target audience — your friends and neighbors right here in Paradise Park.

You can now advertise *your*

- home health care
 - child care
 - hair cuts, manicures, pedicures
 - house cleaning service
 - gardening services
 - window washing, gutters, roofs
 - plumbing services
 - electrical services
 - art and sewing/craft classes
 - car wash service
 - items for sale
 - items for trade/barter
- AND MUCH MORE!**

Rates start as low as \$25 for one month/business card size; 1/4 page for \$50 one time; full page for \$100 one time.

No alcohol or gun advertising will be accepted.

Funds raised for advertising in our *Gazette* will go toward defraying the cost of copying and mailing of our monthly newsletter.

Contact **Lynn Raadik**, Advertising Coordinator (425-1038), or **Virginia Williams**, *Gazette* editor (423-8904).

Paradise Park Committees

Get involved with the Park — offer to serve on a committee and help our Park *run!*

- Ad Hoc — River
- Ad Hoc — Zoning
- Ad Hoc — Water
- Budget
- Building
- Bylaws
- Duck Regatta
- Election Committee
- Emergency
- Fire Brigade
- Flea Market
- Historical
- Insurance
- Mail — Daily and Monthly
- Membership
- Memorial
- Nominating Committee
- *Paradise Park Gazette* and Advertising
- Past Presidents
- Recreation
- Staking
- Sunshine
- Tree
- Long-Range Planning
- Masonic Outreach

Hopefully, a complete list of members on each committee will appear in our next issue!



Masonic Education Series Open to all Park Residents

Brother Mark Hasey, Past Master of Santa Cruz-San Lorenzo Valley Lodge #38, F.& A.M., has agreed to offer his series of Masonic educational classes right here in our Park.

If you have ever sat in on one of Mark's talks about Masonic History, you know you are in for a treat. And to have him instruct you on the "ins and outs" of the three degrees offered in Masonry is a treat — *for men and women alike!*

We would like to get these classes going this summer, but we want to know what would work best for the majority of those interested.

Men and Women Welcome

These classes are open to all — *men and women*. Mark will provide the materials and lead us in discussion of the topic for the day.

Please fill out the accompanying form and return it to Virginia Williams, 488 Paradise Park, or e-mail your answers to:

virginia@wlmsburg.org

She will tally the results and work with Mark to provide the best time for the most people interested.

This is a HUGE opportunity for anyone who wants to learn more about Masonry in general and what the three degrees represent in particular.

And — WOMEN are WELCOME to attend! It is fascinating!

Masonic Education Series in the Park

YES! I want to attend Mark Hasey's series of Masonic Education classes.

I prefer (mark your preferences 1, 2 and 3). Include any comment you may have.

Weekday mornings

Monday _____

Tuesday _____

Wednesday _____

Thursday _____

Friday _____

Weekday evenings

Monday _____

Tuesday _____

Wednesday _____

Thursday _____

Friday _____

How long do you prefer the sessions to be?

30 minutes _____

45 minutes _____

1 hour _____

1-2 hours _____

How often do you prefer the sessions to be held?

Once a week _____

Twice a week _____

Once a month _____

Twice a month _____

How many sessions would you be interested in attending?

1-5 sessions _____

5-10 sessions _____

10 - 12 sessions _____

As many as Mark can present _____

Name _____

Park Address _____

Park Phone _____ e-mail _____

Comment: _____



6.0 NEW BUSINESS

- (a) Member Le Corum requested that Park members be informed of the names and addresses of all Masonic organizations in the area. This will be included in future issues of the Paradise Park Gazette.
- (b) An approval for a car tent was held over until the requesting member appears in person.
- (c) Carl Ames presented a petition signed by 81 individuals asking that motorcycles be permitted to operate in the Park. This matter will be put to member vote in accordance with the Park Bylaws.
- (d) A problem regarding the best way of diverting water runoff from a rock garden, which has been causing problems for the adjacent allotment, was discussed. The Park Manager is to investigate further and develop a solution.
- (e) The improper trimming of a Park tree was discussed. It was decided that an Arborist should determine the extent of possible damage. The member may be fined based on the results.
- (f) A letter from Member Connie Sonnichsen concerning the sale of her allotment was discussed.
- (g) Lois Hardy read the report of the Park Nominating Committee. The Board approved the report and the candidates for the 2002 election are Chuck Buchanan, Fred Dunn-Ruiz, Ted Keller and Barbara Monti. A fifth candidate, Todd Williams, submitted by petition in accordance with Article VII of the Park Bylaws, was also approved by the Board.
- (h) The formal adoption of the Paradise Park 2002-2003 Fiscal Year Budget was tabled to the next BOD meeting when all Board members are expected to be present.

7.0 INFORMATION

- (a) Incident Report 3/16/02, L. Hardy, Jacobsen black/white cat loose.
- (b) Incident Report 3/19/02, T. Feist, Pfaff dog loose (Dakota).
- (c) Incident Report 3/21/02, R. Polglase, Sec. 4 dark, short-haired cat loose.
- (d) Incident Report 4/1/02, G. Logan, went to hospital.
- (e) Incident Report 4/1/02, G. Kaufman, transport to Dominican.
- (f) Incident Report 4/2/02, D. Zevanove, pilot light/gas flash.
- (g) Incident Report 4/10/02, P. Green, Sec. 6 loose cat, grey/white short hair.
- (h) Incident Report 4/10/02, C. Christenson, Sec. 4 stray gray/white cat.
- (i) Incident Report 4/23/02, K. Eneboe, Sec. 2, loose black/white cat.

8.0 CORRESPONDENCE

- (a) 4/12/02 from M. & Y. Jones to BOD, Carport.
- (b) 4/07/02 from J. Willson to J. McHugh, Personal Matter.
- (c) 4/18/02 from E. Simas to J. McHugh, Staking.
- (d) 4/18/02 from J. McHugh to M. Hasey, Run off.

9.0 ADJOURNMENT

Acting President Don Schmidt officially adjourned meeting at 1:14 pm.

Respectfully Submitted,

Approved,

Dan S. Bales
Secretary

Don Schmidt
Acting President

**MINUTES OF THE PARADISE PARK MASONIC CLUB BOARD OF DIRECTORS
MAY 2002**

1.0 EXECUTIVE SESSION FROM 8:00 AM TO 9:00 AM

Two fines were levied by Board action. One member was fined \$75.00 for operating a motorcycle within Paradise Park and a second member was fined \$200.00 for extensively trimming a tree without obtaining prior written approval. Director Bales reported on a recent conversation with a California Association of Realtors attorney. The attorney advised that Paradise Park falls under the State of California Davis-Sterling Act that controls all common interest developments within the State. As a result, Director Bales recommended that a formal opinion and possible compliance direction concerning this matter be obtained from an attorney specializing in common interest law.

2.0 CALL TO ORDER - MEETING OF MAY 25, 2002

Meeting called to order at 9:05 a.m. by President Tod Likins. Also in attendance were Vice President Don Schmidt, Secretary Dan Bales, Treasurer Malcolm Hotchkiss and Director at Large Bill Eckard. Invocation led by Jack McHugh. Open Board Meeting.

3.0 CONSENT ITEMS APPROVED

- (a) Acceptance of Minutes of April 27, 2002 BOD Meeting.
- (b) Acceptance of Minutes of May 16, 2002 Executive Hearing.
- (c) Financial Report - April 2002.
- (d) Special Circumstance/Approval of Kristi Lentfer Miller, Alternate Associate to Minor 'Stretch' Lentfer.
- (e) Approval of Memberships:
 - (1) Members Before the Board
 - a. Andrea J. Ames, purchasing 289 The Royal Arch from Carl Ames.
 - b. Charles E. Cook, purchasing 698 St. Johns Avenue from Eugene Molfino.
 - (2) Associate Members Before the Board
 - a. Stefanie R. Ames, Associate to Carl Ames @ 351 Crypt Lane.
 - b. Jean L. Cook, Associate to Charles E. Cook @ 698 St. Johns Avenue.
 - (3) Alternate Associate Members Before the Board
 - a. Evonne D. 'Bonnie' Olson, Alternate Associate to Evan 'Duke' Jelciek @ 630 St. Augustine

4.0 MANAGER'S REPORT

- (b) Jack McHugh, Park Manager, advised the Board of the aging fleet of vehicles that will require replacing in the future. The manager was requested to develop a replacement schedule for the next Board meeting.
- (c) The upgrade to an automated back gate is progressing. PG&E is in the process of installing a meter to monitor electrical usage.
- (d) The erosion of the Entrance Road retaining supports was discussed. The services of a qualified engineer will be obtained to assess the extent of damage and needed repairs.
- (e) A leakage of contaminated liquid at 607 Keystone has been fixed. The manager is to follow up if any further occurrences are reported in the future.

5.0 UNFINISHED BUSINESS

- (b) The recommended 2002-2003 Fiscal Year Budget was approved.
- (c) The Wiseman/Priest boundary issue is in the process of being resolved. Both parties are working together to arrive at a mutually acceptable resolution without Board intervention.
- (d) Judy Gloeckler, Chairperson of the Park Tree Committee, reported on the operational changes which will occur as a result of the Park contracting with an advisory Arborist.
- (e) Virginia Williams, Editor of the Paradise Park Gazette, advised the Board on suggestions for the types and sizes of advertising which should be accepted for inclusion. The Board was pleased with the recommendations and requested that the members be informed in the Gazette.
- (f) Billy Uber, Chairperson of the Park Water Committee, reported that a full committee has been formed. The additional members are: Bob Biendle, Cynthia Crogan, Bill Denton, Bill Gibson, Craig Little, Bob Sand, and Bob Wunce. The Committee was asked to develop

**MINUTES OF THE PARADISE PARK MASONIC CLUB BOARD OF DIRECTORS
MAY 2002**

1.0 EXECUTIVE SESSION FROM 8:00 AM TO 9:00 AM

Two fines were levied by Board action. One member was fined \$75.00 for operating a motorcycle within Paradise Park and a second member was fined \$200.00 for extensively trimming a tree without obtaining prior written approval. Director Bales reported on a recent conversation with a California Association of Realtors attorney. The attorney advised that Paradise Park falls under the State of California Davis-Sterling Act that controls all common interest developments within the State. As a result, Director Bales recommended that a formal opinion and possible compliance direction concerning this matter be obtained from an attorney specializing in common interest law.

2.0 CALL TO ORDER - MEETING OF MAY 25, 2002

Meeting called to order at 9:05 a.m. by President Tod Likins. Also in attendance were Vice President Don Schmidt, Secretary Dan Bales, Treasurer Malcolm Hotchkiss and Director at Large Bill Eckard. Invocation led by Jack McHugh. Open Board Meeting.

3.0 CONSENT ITEMS APPROVED

- (a) Acceptance of Minutes of April 27, 2002 BOD Meeting.
- (b) Acceptance of Minutes of May 16, 2002 Executive Hearing.
- (c) Financial Report - April 2002.
- (d) Special Circumstance/Approval of Kristi Lentfer Miller, Alternate Associate to Minor 'Stretch' Lentfer.
- (e) Approval of Memberships:
 - (1) Members Before the Board
 - a. Andrea J. Ames, purchasing 289 The Royal Arch from Carl Ames.
 - b. Charles E. Cook, purchasing 698 St. Johns Avenue from Eugene Molfino.
 - (2) Associate Members Before the Board
 - a. Stefanie R. Ames, Associate to Carl Ames @ 351 Crypt Lane.
 - b. Jean L. Cook, Associate to Charles E. Cook @ 698 St. Johns Avenue.
 - (3) Alternate Associate Members Before the Board
 - a. Evonne D. 'Bonnie' Olson, Alternate Associate to Evan 'Duke' Jelcick @ 630 St. Augustine

4.0 MANAGER'S REPORT

- (b) Jack McHugh, Park Manager, advised the Board of the aging fleet of vehicles that will require replacing in the future. The manager was requested to develop a replacement schedule for the next Board meeting.
- (c) The upgrade to an automated back gate is progressing. PG&E is in the process of installing a meter to monitor electrical usage.
- (d) The erosion of the Entrance Road retaining supports was discussed. The services of a qualified engineer will be obtained to assess the extent of damage and needed repairs.
- (e) A leakage of contaminated liquid at 607 Keystone has been fixed. The manager is to follow up if any further occurrences are reported in the future.

5.0 UNFINISHED BUSINESS

- (b) The recommended 2002-2003 Fiscal Year Budget was approved.
- (c) The Wiseman/Priest boundary issue is in the process of being resolved. Both parties are working together to arrive at a mutually acceptable resolution without Board intervention.
- (d) Judy Gloeckler, Chairperson of the Park Tree Committee, reported on the operational changes which will occur as a result of the Park contracting with an advisory Arborist.
- (e) Virginia Williams, Editor of the Paradise Park Gazette, advised the Board on suggestions for the types and sizes of advertising which should be accepted for inclusion. The Board was pleased with the recommendations and requested that the members be informed in the Gazette.
- (f) Billy Uber, Chairperson of the Park Water Committee, reported that a full committee has been formed. The additional members are: Bob Biendle, Cynthia Crogan, Bill Denton, Bill Gibson, Craig Little, Bob Sand, and Bob Wunce. The Committee was asked to develop

alternative recommendations for the June Board meeting on how best to proceed on water system upgrades now that the sale of the Castle property has been finalized.

- (g) A recommended schedule for Park rule infraction fines is still in the process of being developed. Several alternatives were discussed, but none were adopted at this time.
- (h) The Guard Shack roof repair bid of Cynthia Crogan was accepted. The bid total is \$7,350.00.
- (i) Carl Ames again addressed the Board on the desirability of allowing motorcycles to operate within the Park. The previously submitted petition was found not to be acceptable since many of the signatures were from a survey rather than direct approval of the petition. It was suggested that limiting the operation of motorcycles to responsible members with a permit approval process might help sell the idea to the Park membership.
- (j) Cynthia Crogan gave a very well prepared presentation on what has been learned about the structural integrity of the Covered Bridge during her cleaning of it. The presentation was most informative and will result in several changes in the handling of repairs to the Bridge in the future. We have a very important historical landmark that is well worth saving.

6.0 NEW BUSINESS

- (a) A lodge life member requested that the requirement for yearly verification of masonic membership be waived due to problems of receiving same from his Philippines-based lodge. However, since this is a requirement of the Bylaws (Article III, Paragraph 11), the Board does not have the power to waive the requirement.
- (b) Malcolm Hotchkiss, Board Treasurer, advised the Board on the best method for the investment of the approximately \$950,000.00 the Park will net from the sale of the Castle Property. The Board approved the placement of the funds in insured Certificates of Deposit of varying denominations and maturity dates. This will allow for the release and reinvestment of funds as required.

7.0 INFORMATION

- (a) Incident Report 4/29/02, L. Pattison, Observed Loose Dog/Garden Damage.
- (b) Incident Report 5/6/02, N. Sawley, Transported to Dominican.
- (c) Incident Report 5/10/02, C. Sawley, Returned to Home.
- (d) Incident Report 5/13/02, W. Vinson, Observed member Cruising Motorcycle in Section 4.
- (e) Incident Report 5/13/02, C. Houchin, Observed member Riding Motorcycle at Bridge.
- (f) Incident Report 5/13/02, B. Monti, Observed Person Riding Motorcycle, Baseball Field.
- (g) Incident Report 5/16/02, C. Hoffman, cat on doorstep (#1 of Office Porch pictures).
- (h) Incident Report 5/15,16/02, W. Vinson, grey/white cat, killed bird in front yard.
- (i) Incident Report 5/6,8/02, N. Heer, orange cat in yard, stalking birds.

8.0 CORRESPONDENCE

- (a) 5/10/02 to S. & R. Reedy, from J. McHugh, Remodel Approval.
- (b) 5/16/02 to PPMC from Agricultural Comm., placement of gypsy moth trap.
- (c) 5/17/02 to BOD from J. Fitzpatrick, Son's Appearance at 4/27/02 BOD mtg.
- (d) 5/18/02 to B. Wunce, cc to BOD, from J. Jelcick.

9.0 ADJOURNMENT

President Tod Likins officially adjourned meeting at 12:16 p. m.

Respectfully Submitted,

Approved,

Dan S. Bales
Secretary

Tod Likins
President

Paradise Park Candidate Resume Form

Name of candidate:

- Chuck Buchanan

Number of years a member of PPMC:

- Three years and three months as of April 16, 2002

Name of spouse:

- Judy

Park address:

- 182 Saint Bernard Street

Education:

- Bachelor of Arts – University of Colorado

Military service:

- Staff Sergeant, NCOIC-Crypto Section, 138th Aircraft Control and Warning Squadron, Colorado ANG

Principal occupation & career summary:

- United Airlines (retired) 34 years, retired as Senior Instructional Design Specialist – Maintenance Training, San Francisco Maintenance Operations Center
- Consultant with HKS Aviation Management Consulting, Redwood Shores, CA
- Training Design Consultant for Wunderlich Malec Engineering, Minneapolis, MN
- Technical Writer for United Behavioral Health, San Francisco, CA

Masonic organizations & offices held:

- Blue Lodge – Mission Lodge #169, San Francisco, Marshal
- Soquel-Pajaro Lodge #110, Soquel
- Santa Cruz Redwoods Chapter #273 O.E.S., Santa Cruz
- 32^o Scottish Rite of Freemasonry, Valley of San Jose

Other organizations & offices held:

- Association for the Development of Computer-based Instructional Systems (A.D.C.I.S) Board of Directors and Newsletter Editor, Denver Chapter President; President
- Two term elected to Board of Education, School District #12, Adams County Colorado
- President, Adams County Board of Cooperative Educational Services (Cooperative purchasing and multi-million dollar self insurance pool for 5 school boards)
- Air Transport Association-Aviation Maintenance Training Sub-committee, Representative to Aviation Industry Computer-based training Committee (Established standards for worldwide aviation training standards)

What PPMC committees have you served on and what PPMC events have you hosted or assisted?

- Chairman, Long-Range Planning Committee
- President, Men's Club 2000-2001
- Budget Committee 2001
- By laws Committee
- Co-Editor Paradise Park Bulletin with Judy Buchanan
- Moderator of PPMC e-group
- Have co-hosted Potluck

Significant reason for becoming a candidate for PPMC Board of Directors:

I believe my 8 years experience as an elected member of the Board of Education, School District No. 12, Adams County, Colorado where I served as Treasurer and President, can be applied to Paradise Park Masonic Club to help maintain PPMC. We must continue improvements to Health and Safety, Community Building, and Environmental Stewardship for present and future members. Our school district served 20,000 students with a \$70+ million balanced operating budget. Those practices can be applied to PPMC to help assure that we face increasing costs of operation within our resources. We must maintain appropriate reserves to maintain our assets and services in the face of the unexpected. We will need financial accounting visibility to members. We are facing the possibility of critical expenditure of the proceeds from the Castle Property that we must do carefully. We will need member's help in assuring we set appropriate objectives. I believe that Paradise Park Masonic Club is a unique community that has the advantage of a common base of core-values. Continuing to maintain those core-values in an evolving society is important to us all. The basis for a strong and happy community is good communication and opportunities for participation.

Paradise Park Candidate Resume Form

Name of Candidate:

Fred Dunn-Ruiz

Number of Years a Member of PPMC:

1942-1972 as a dependent of member
1972-1982 as an Alternate
1982-2001 as an Associate
2001-2002 as a member and resident

Name of spouse:

Mary Jo Dunn-Ruiz

Park Address:

382 Hiram Road

Other Address if Applicable:

N/A

Education:

BA in Mathematics, U.C. Berkeley (1962)
MA in Mathematics, College of Holy Names (1972)
California Administrative Credential, Level I, U.C. Berkeley (1990)
California Administrative Credential, Level II, C.S.U. Hayward (1995)

Military Service:

None

Masonic Organizations & Offices Held:

Member of Fruitvale Lodge #113, San Leandro
No offices held.

Other Organizations & Offices Held:

California Math Council
Union of Berkeley Administrators
Site Representative
Vice-President
President
Negotiator

What PPMC Committees Have You Served on and What PPMC Events Have You Hosted or assisted:

Hosted Section Party with my wife and mother
Served on Recreation Committee
Serving on Tree Committee
Have run Labor Day Tennis Tournament for 20 years

Significant Reason for Becoming a Candidate for PPMC Board of Directors:

I am running for the Board because I love Paradise Park. For four generations, PPMC has provided my family a place to relax and to enjoy friendships, recreation, and nature. It is my goal to maintain the essence and spirit of PPMC for future generations. I feel that I can fairly represent all members of the Park because I believe in participatory

government, where all persons affected by a decision have an opportunity to have input into that decision.

Principal Occupation & Career Summary:

I am now retired after 38 years in Public Education. I taught high school mathematics and was a California nominee for the Presidential Award for Excellence in Teaching of Mathematics in 1987. At Berkeley High School, I served as the Math Department Chairperson for 20 years and a Vice Principal for 3 years. As Math Department Chairperson, I was responsible for hiring, evaluating and supervising 30 teachers, for the departmental budget, for curricular changes and for textbook selection. As Vice Principal, student discipline was under my jurisdiction as was the custodial and maintenance of the school. As Union negotiator for 15 years, I learned to work through differences to find a solution satisfactory to both labor and management. My strengths of leadership include being a participatory manager, a good listener, and a good problem solver and mediator.

CANDIDATE FOR BOARD OF DIRECTORS

Name of Candidate:

Edward (Ted) Keller

Number of Years a Member of PPMC:

Three

Name of Spouse:

Shari Keller

Park Address:

532 St. Ambrose

Other Address if Applicable:

N/A

Education:

BA – San Francisco University

Military Service:

U.S. Army Medic

Masonic Organizations & Offices Held:

Past Master Mission Lodge #169, San Francisco

Mission Lodge Hall Association – 4 years

Scottish Rite, San Francisco

Islam Shrine

Santa Cruz San Lorenzo # 38 – Hall Association & Candidate Coach

Santa Cruz Shrine Club

OES Santa Cruz Redwoods # 273

Amaranth

Other Organizations & Offices Held:

Elks, Santa Cruz

Business Event Planning & Management Chairman

Home Owners Association Board of Directors

What PPMC Committees Have You Served on and What PPMC Events Have You Hosted or Assisted:

President of PPMC Mens' Club

Severved on Staking Committee, Recreation Committee, & Long-Range Planning Committee

Co-chaired BBQ & Potluck Dinners

Significant Reason for Becoming a Candidate for PPMC Board of Directors:

Park members have encouraged me to run in order to bring fresh ideas to benefit Paradise Park. I believe in the importance of applying Masonic ideals and practices to guide our community. It is important to maintain a high quality environment for our members. We must have a safe environment that provides opportunities for fun and fellowship. One foundation for a strong community is good communication that I encourage and strive to maintain. Being a full time resident I am committed to maintaining the beauty of Paradise Park as well as making necessary improvements to our infrastructure.

Principal Occupation & Career Summary:

My main profession was that of a salesman! The job description is someone who sell "things."

My work was showing, explaining, correcting, and collecting the monies owed. A salesman is responsible for all aspects of a sale, selling the item, delivery, correct any problems at the job site, and correct the misconception some of my office workers may have about the intent of the customers.

My real job was working with all levels of people, the president of a corporation or his middle management. I solved problems and helped created the correct thought process that enabled me to retain most customers for the life of my selling career.

CANDIDATE FOR BOARD OF DIRECTORS

Name of Candidate:

Barbara (Alford) Monti
Birthdate – July 8, 1946

Number of Years a Member of PPMC:

25 as some form of member; 49 years in PPMC (my parents were Dorothy & Frank Alford)

Name of Spouse:

Rod Monti

Park Address:

233 Temple Lane

Other Address if Applicable:

P.O. Box 447, Kings Beach, CA 96143

Education:

BA Degree San Jose State; Parks & Recreation Degree, with minors in Psychology & Sociology
AA Degree Chabot College; Journalism degree

Military Service:

N/A

Masonic Organizations & Offices Held:

Santa Cruz Redwood Chapter OES – 25 year member;
Past Grand Editor – International Order of Rainbow for Girls;
Past Worthy Advisor – International Order of Rainbow for Girls;
Grand Cross of Color Recipient

Other Organizations & Offices Held:

College – Managing Editor of college newspaper; student government officer

What PPMC Committees Have You Served on and What PPMC Events Have You Hosted or Assisted:

Presently on the current Budget Committee;
Presently on the Recreation Committee;
I have worked on the annual cleanup weekend
Hobbies – photography, reading, snow skiing, bicycle riding, certified scuba diver, garage sale enthusiast

Significant Reason for Becoming a Candidate for PPMC Board of Directors:

I have spent a significant part of my life growing up in PPMC. I would like to be able to give something back so that future generations may also enjoy this unique community of ours.

While currently serving on your budget committee I have become extremely concerned with the status of our finances and the huge deficit budget we were presented with. We (PPMC) are going to be faced with many financial decisions in the coming several years, and it is going to take board members who are committed to making those decisions. I would also like to see our "standing" committees back in active force, giving guidance towards the direction that PPMC should head towards in the next 5-10 years.

I have been vocal whenever I see issues that I feel need to be addressed. This vocal opposition is due to a concern in the direction and guidance by the Board. It should not be construed as a personal attack on any specific individual. We need to work together towards specific goals. Each of us is one individual, but as a collective group we can keep PPMC the unique community that it is for all of us – both part time and full time residents.

Principal Occupation & Career Summary:

Library Media Specialist and Substitute Teacher

Paradise Park Candidate Resume Form

Name of Candidate: Todd Edward Williams

Number of Years a Member of PPMC: 13 years plus

Name of Spouse: Virginia

Park Address: 626 St. Augustine (488 Paradise Park)

Other Address if Applicable: (none)

Education: Trained as a Marine Engineer, United States Merchant Marine Academy
B.S. – Human Relations Organizational Behavior, University of San Francisco

Military Service: Naval Reserve 1968-1973

Masonic Organizations & Offices Held:

Youth Activities:

DeMolay

Initiated into Chula Vista Chapter, Order of DeMolay 3/15/1966
Representative DeMolay 1967
Junior Councilor – Chula Vista Chapter, Order of DeMolay 1967
Senior Councilor – Chula Vista Chapter, Order of DeMolay 1968
President of Kings Point DeMolay Club 1970
Honorary member of Tokyo Chapter, Order of DeMolay 1970
Chevalier 1972
Past Commander of the Orange County Court of Chevaliers 1973
DeMolay Advisor – Anaheim 1973 / 1975-1978
DeMolay Advisor - Santa Cruz 1989

Rainbow

Rainbow Dad - Anaheim 1974
Rainbow Dad – Santa Cruz 1996-1998-2002
Rainbow Board – Santa Cruz 2002
Chairman of the Board – Santa Cruz Rainbow 2002

Blue Lodge

Joined Anaheim #207, F & AM – Raised a Master Mason 11/22/1974
Affiliated with Santa Cruz #38, F&AM 1989
Junior Steward – Santa Cruz #38 F&AM 1991
Senior Steward – Santa Cruz #38 F&AM 1992
Senior Deacon – Santa Cruz – San Lorenzo Valley Lodge #38 F&AM 1993
Junior Warden - Santa Cruz – San Lorenzo Valley Lodge #38 F&AM 1994
Senior Warden - Santa Cruz – San Lorenzo Valley Lodge #38 F&AM 1995
Master, Santa Cruz – San Lorenzo Valley Lodge #38, F&AM 1996
Webmaster, Santa Cruz – San Lorenzo Valley Lodge #38, F&AM
..... (www.sc-slv38.org) 1998-1999-2000-2001-2002
Assistant Secretary, Santa Cruz – San Lorenzo Valley Lodge #38
..... 1998-1999-2000-2001-2002
Member of Temple Board 1995-1996-1998-1999-2000-2001-2002
Secretary, Santa Cruz Masonic Temple Foundation 1998-1999-2000-2001-2002

Eastern Star

Joined Anaheim #273, OES 8/23/1977
Affiliated with Santa Cruz #273, OES 1989
Associate Patron – Santa Cruz Chapter #273, Order of Eastern Star 1992
Worthy Patron - Santa Cruz Redwoods, #273, OES 1993
Member, J.C. Lee Memorial Cancer Fund Committee 1996-1997
Chaplain, Santa Cruz Redwoods 1997
Treasurer, Santa Cruz Redwoods Chapter 1998-1999-2000-2001-2002
Chairman, Grand Chapter of California, Web Site Committee .. 1998-1999-2000-2001-2002

Affiliated with Athena Chapter #462000
 Chaplain, Athena Chapter #46 2001-2002
 Web Master, California Candlelighters
 (www.candlelighter.org) 1998-1999-2000-2001-2002

Other Masonic Activities

Joined Burlingame Scottish Rite1980
 Joined Islam Shrine1980
 Elected member of the Board of Directors, PPMC.....6/1989
 Chosen President of the Board of Directors, PPMC6/1992
 Active Member, Paradise Park Past Presidents Committee..... 1993-present

Other Organizations & Offices Held:

American Institute of Plant Engineers (American Facilities Engineers) 1985-1998

What PPMC Committees Have You Served on and What PPMC Events Have You Hosted or assisted:

Past Presidents, Chairman.....(for various meetings)
 Webmaster, Paradise Park Web Site (www.paradisepark.org)..... 1998-1999-2000-2001
 Pot Lucks..... 1991-1992

Significant Reason for Becoming a Candidate for PPMC Board of Directors:

Having previously served as a member of the board, I was asked if I would again run for the board.

While I was not nominated by the nominating committee, I have offered my name under Article VII, Section 3 of our Bylaws. I have submitted over 40 signatures.

I love Paradise Park as much as any member. This is my home and I am concerned about the long term viability of our community. As cost and regulations continue to burden us, we must insure that we explore all opportunities to control our expenses and maintain the flavor of our special place. Without some "out of the box" thinking, our costs will continue to force our community to merge into the urban sprawl that we left. At the same time, we must realize that just as we have trees here today that were not here when our founders established the allotments and roads, we continue to bring into the park the trappings of home: televisions, king-sized beds and computers. The pressures of technology, sprawl and the economy make it difficult to maintain the park as our founders envisioned.

I offer my experience to assist in our continued effort to maintain our Paradise.

Principal Occupation & Career Summary:

Project Manager: Over 15 years experience managing projects and people for building owners and consultants with a history of success in facility construction and renovation, with a proven track record of bringing projects in on-time and on-budget; an ability to think "outside-the-box" to recognize and solve technical problems; an extensive knowledge of computers and software with a background in developing management reporting systems. Led the design and remodel of offices and manufacturing facilities for AMD and Signetics. Led the design, remodel and expansion of R&D space for ESL, a DOD contractor providing 70k sq.ft. of project specific development space — SCIF. Held TS Clearance. Managed teams of engineers who designed semi-conductor equipment installation packages and tenant improvements. Have developed multiple management reporting systems using desktop computers and standard software, providing management organizations with information required for project management and customer communication. Have spent time in the field, communicating tenant design objectives with tradesmen, architects and engineers.

I have also owned and operated a computer based consulting service providing a range of professional services.

FOR SALE BY MEMBER — JUNE 2002

Member's improvements offered for sale as of June 2, 2002. All allotment use privileges and Membership are subject to the approval of the Board of Directors.

IMPORTANT NOTICE

The sellers solely provide the descriptions of improvements for sale. Such information is not verified or checked for accuracy by Paradise Park Masonic Club, Inc. The Club does not warrant, and disclaims any responsibility for, the accuracy, truthfulness or completeness of any information provided. All questions about allotment improvements should be addressed solely to the seller.

• ADDRESS	• MEMBER	• PRICE	• DESCRIPTION
462 York Ave.	Patricia Herzog 458-9841	\$189,500 MAKE OFFER	Lovely newer home. Sunny lot w/bright interior. Tastefully decorated, 2 BR, 2 BA, 1,100 sq. ft.; fully insulated w/forced air furnace plus gas log stove, Jennair range; island in kitchen; full attic, walk-in closet in MB, 1 car garage; large deck and side brick patio. Includes all appliances and some furniture.
SECTION 2			
378 Hiram Road	Margaret L. White c/o Brian de Diego 831/688-7434	\$110,000 SALE PENDING	House 550 sq. ft., 1 BA, 1 BR; Guest House 150 sq. ft., full bath/tub, washer & dryer, wash tub; 1-car carport; includes stove, refrigerator, washer/dryer, new water heater, most furniture; Allotment 3,667 sq. ft.
279 Keystone Way Open House Every Day 10AM to 5PM Please enter through Rear Kitchen Door	Cal DeVecchis 1-360-681-0515 OPEN-MINDED TO ANY OFFER Before Spr/Sum HomeBuying Frenzy Begins	\$219,000 CREATIVE FINANCING AVAILABLE AT 5% INTEREST UP TO 7 YRS	First/ most sunshine; completely upgraded household. Gardener's/Bird watcher's delight w/privacy. 3 BR, 1 BA, delightful kitchen & living rm. New deck area, winterized 10' x 13' laundry rm. Study & computer area. One BR is detached 138 x 98 cottage. Room for 3 cars. All modern appliances included, & any modern furniture of your choice. New modern fireplace, roofing, sliding glass door; add'l storage area under cottage & in front of laundry area. I wish also to include our family's gratefulness for the best neighbors throughout the years.
280 Keystone Way	Jason Morgan 831/420-1686	\$127,000 SOME FINANCE AVAILABLE	2 allotments; sunny location; 2 BR, 1 BA; 2-story w/room for expansion; lg 2 car carport; engineered foundation 8 ft. deep; plumbing /wiring approx. 6 yrs old; 2 lg decks overlooking river & covered bridge; MUST SEE!!!; TADS paid 'til December 2002.
364 Eastern Star	Jeanne Jelcick 831/426-7666 Call for Appt./Info.	\$285,000	Cute little 4BR + sleeping loft or 2BR + office + den. Upgraded septic & electric. Modern kitchen, stack washer/dryer. Good sun & great privacy w/huge beautifully landscaped allotment.
SECTION 3			
SECTION 4			
678 St. Paul Street	C. Sonnichsen Deke Sonnichsen 650/326-7679	\$65,000	Cabin on Eagle Creek, 3 BR, 2 BA, large kitchen and large living room, dining area, electric floor heating. Appliances included: Refrigerator, gas range, and turkey roaster. Furnishings include Beds, chairs, and sofas.
SECTION 6			
139 St. Alban St.	Scott Snyder 429-2079	\$173,800 or best offer SALE PENDING	3 BR, 2 BA, 1,763 sq. ft., Home/Improvement on 9,600 sq. ft. allotment. Lots of space. Lg Master bedroom w/Bath, Indoor Laundry Room, Vaulted Ceilings, 2 lg Backyards w/BOD approved fence, lg private deck, attached 1 car garage w/ample parking around home, 2 separate phone & Cable Lines, New Exterior Paint, Fresh Interior Paint & Carpets Cleaned at Close of Sale, Jennair stove, 2 wood stoves, washer & dryer included. NEW ROOF TO BE INSTALLED Dec. 1, 2001. TAD's paid until April 1, 2002.
170 St. Bernard St.	Hazel Kindwall Carolyn Unger 469-9107	\$285,000	Sunny lot, 2 BR, 1 1/2 BA, no road noise, no flood danger, garage parking, and spaces on both sides, corner lot. Appliances include: oven range, some furniture, drapes.
104 Keystone Way	Mary Etta Baldrige 559/659-2683	\$215,000	2BA, 2BR, 4650 sq ft allotment, 1383 sq ft improvements, auto sprinklers/drip front & back, carport, 2 skylights, propane heat/water heater, modernized & renovated interior, plenty of sunshine, includes stove/microwave, dishwasher, disposal, refrigerator.
115 Keystone Way	Lucille Avery For appt. call Cindy Crogan 831/426-2756	\$225,000	Spacious Ranch Style Home; lg. 14' X 24' Lv. Rm. W/open beam ceiling, brick fireplace & picture windows; upgraded bathroom; carport, workshop/shed & finished room; redwood deck & surrounding concrete walkway; AS IS; refrigerator, stove, washer/dryer included.
120 Keystone Way	Gordon Crafts 423-3228	\$350,000	Large 2 BR, 1 1/2 BA, location in front of Park, unobstructed view of river and forest, improvement approx. 1,600 sq. ft., central gas heating, two phone lines, new roof, storage shed in carport, in and out driveway, ample parking. Room for expansion. Furnishings include: 1 MAC computer and desk.
189 St. Bernard St.	Miriam Kourik 831/426-8224	\$235,000	Split level home, 2 BR, 1 1/2 BA, new septic tank, new roof; sunny with nice yard; allotment located in front of the Park.

San Lorenzo River Steelhead Release

The San Lorenzo river and the fish in it, as well as the majestic redwoods here in PPMC, are all a part of nature's heritage to us.

As can be seen in the photo at right, the Monterey Bay Steelhead Trout Project (a volunteer organization) was actively releasing steelhead into the San Lorenzo River on April 16, 2002.

The 7 large male, and 2 female steelhead released at Sandy Beach on Temple Lane (near the office) were released into the watershed (San Lorenzo River) where they were originally captured. This is per new guidelines by DFG (De-

partment of Fish and Game) and NMFS (National Marine Fisheries service).

As stewards of the natural resources here in PPMC, we are being of service by allowing the fish-holding tank on Shrine Way to help in this endeavor. The hatchery program is enhancing the steelhead population in our rivers with hopes of restoring it to its historical fish levels.

For more detailed information on this project, please check out the web site titled: [Monterey Bay Steelhead Trout Project](#).

Photo below: Allen Smith, chairman of MBSTP board and volunteer coordinator, along with a volunteer, release steelhead into the San Lorenzo River.



Article and photo by Barbara Alford Monti

JUNE 2002 — Page 28

from **The Advocate's Website.**

PARADISE PARK
MASONIC CLUB
211 Paradise Park
Santa Cruz, CA 95060-7003
831-423-1530 FAX 831-423-2806