



From the Advocates Website

## PARADISE PARK MASONIC CLUB BULLETIN - APRIL 2001

EDITORS—CHUCK & JUDY BUCHANAN 471-2314—633 PARADISE PARK—IMPERSOL@JPS.NET

### TOD'S TURN

#### **Living Trust Wording**

A number of our members have, through the years, been asking whether they could put their Paradise Park membership into a living trust. The answer has been no because the determination of membership was not something that could be made in a living trust. We had said that the improvements could be in a trust but that if someone other than that person's Associate or Alternate Associate were named as the inheritor, the improvement would be sold and the proceeds of that sale is that which would be inherited. Our attorney has now come up with language that will make that process simpler. If you wish to put your membership in a living trust you may now do so, providing the trust contains specific language clarifying the conditions under which the membership was allowed into the trust. Copies of that language are available in the office. That same language would be used in a transfer document that we will use to make that change, should you request it.

#### **Thief at Work**

Several cars were broken into in recent weeks. I encourage you to keep your vehicles locked and be on the look out for strangers walking in the Park at night. From the articles taken it would appear that this is the work of an amateur and probably not a dangerous or professional criminal. You might stop your car and ask folks you don't recognize if they need any help as a way of deterring illegal action. Once clearly

seen, most wanderers will leave rather than be identified later on.

#### **Lock the Back Gate**

The back gate is being left open at night causing some concern with people living in Section 4. Our crews nearly always lock that gate at the end of their work day and someone with keys is then opening it and failing to relock it. The gate is kept locked to help keep outsiders from wandering through the Park at night and it is to our advantage to keep it that way. Please be sure you are not the one leaving the gate open in the evening.

#### **Rules and Pledge Available**

The Rules and Procedure document that the Board intends to adopt in concert with the approval of the proposed Bylaws is now available in the office, as is the Fraternal Pledge that we are going to ask new members to sign. If you are interested in seeing these, drop by and pick them up. The Rules and Procedures are very nearly the same as currently exist but the language has, hopefully, been clarified.

#### **Open Board Meeting**

We tried our first open Board meeting in March in our ongoing effort to make the Board more accessible to the membership and my sense was that it went very well. We will continue this effort for as long as it seems to be working. Our next Board meeting is on April 28th in the Social

*(Continued on page 2)*

### OPEN BOARD MEETING A SUCCESS

The next PPMC Board of Directors meeting is April 28th at 9:00 a.m. in the Social Hall. You are welcome to attend.

### EASTER EGG HUNT

Saturday, April 14th at 11:00 a.m. in the Picnic Grounds.

You may hide eggs anytime before 11:00 a.m. There are areas for up to 5 year olds, 6 to 8 year olds, and 9 and over. Everyone may participate. Bring a pot luck for the customary sharing after the Easter Egg Hunt. (Bring your own dishes and utensils.)  
Your host: Cal DeVecchio 420-0749

### Looking Good

Thanks to Alan Shattenburg and his crew: Lou Bernard, Oz Boswell, and Willow Jones for making PPMC look better than it has for a while.

Volunteers such as Mary Akins who does the entrance and Bill Eckard who cleans most of the entrance road also make a great contribution.

Individual efforts at each allotment also makes a huge difference. Thanks to you all!

If you do what you should not,  
you must bear what you would not.  
-Benjamin Franklin

(Continued from page 1)

Hall and will start at 9:00 AM. You are invited to watch our progress.

### **PPMC's New Fire Truck**

We had a very late addition to our agenda in March and with the unanimous approval of the Board we reconvened into open session after our executive session to accept the donation of a 1981 Dodge Fire Brush Control Unit (Fire truck). The Board is very concerned about our liability in fighting local house fires and thinks that our best bet to get a fire out is to do everything we can to see that the Santa Cruz firefighters can get to the fire in the most direct and efficient manner. None-the-less, we recognize that there may be situations in which the Santa Cruz Fire Department cannot help us and then we will need our own equipment and trained personnel to step in. We agreed to spend \$1500 for repairs already completed and do some work on the pump but the vehicle seems to be in good condition and will suit our purposes well.

### **No Manager Yet**

The Board has not yet been able to hire a new manager. We have found applicants in whom we were very interested but they required more money than we think we can pay. The market for competent management is pretty tough right now in spite of what we thought was a turndown in employment. The Board is committed to finding the right person for this job but salaries in this market seem to be awfully high. We will do our best.

### **Phone Co. Proposal**

The Telephone company, Pac Bell, has been interested in placing a box panel at the front of the Park. They originally offered us \$2000 for the use of a space to the left of the entrance on Park property. We declined that offer. We are now being offered \$10,000 for an easement on a space to the right of the entrance, adjacent to the highway between the horseshoe pit and the large redwood tree. It would be a 15 foot square easement just south of the entrance playground area. We would also provide them with an access easement

which would be used by both them and us.

There are several advantages to accepting this offer aside from badly needed income. First is that they would take down the panel that now sits on the roadside just outside our gate where they very frequently have trucks parked as they work on that panel. The new box would have off road access to it through the gate located just to the left of the proposed box. The parked Pac Bell trucks are currently a significant obstacle when one drives into the Park. Second, the new box is specifically designed to provide access to DSL internet connections and while that doesn't assure immediate connect ability, it does make it possible in the future.

The easement would be in perpetuity but would be a single purpose easement, which is to say they could only use the box they intend to install for it's original purpose and could not change the function or form of the box once it is installed. Should, through the years, the need for this current purpose change they will quit claim the easement back to us. They will fence off the box to make it look presentable and fit into the area. Your Board is looking very favorably on this option.

Thanks for all your continued support,  
Tod Likins  
Board President

### **TWO Babies in PPMC**

An unusual event for Paradise Park is the birth of two babies in one month (or even one year recently). Emily Wyatt O'Brian was born on March 1st to Heather and Jim O'Brian. And then Dylan Morgan Greer was born on March 7th to Kelly and Jeff Greer.

A nation without dregs and mal contents is orderly, peaceful and pleasant-but perhaps without the seed of things to come.

-Eric Hoffer

## **Letters to the Editors**

Dear Editors,

What a great job you did on the March issue of the PPMC Bulletin! I read it several times and can't tell you how much it means to me to have all the news. The content was fascinating and the layout was nearly perfect. I can't wait for the next issue.

Love Mom

Yes, we do print letters from Bulletin readers. They don't even have to be complimentary. If it is something you feel is important, send us an e-mail, or a note to the addresses below. We only print signed letters and letters may be edited for length.

Chuck & Judy Buchanan  
633 Paradise Park  
Santa Cruz, CA 95060  
Impersol@jps.net

### **Subscribe to the Bulletin**

Do you have an Associate, Alternate Associate, relatives, friends who would like to receive the *Paradise Park Bulletin*? For a year's subscription, just send a check for \$15 to **Paradise Park Masonic Club, 211 Paradise Park, Santa Cruz, CA 95060-7003**. Be sure to include the name and address where the *Bulletin* should be mailed.

### **Mail Forwarding Service**

The office and mail volunteers will forward your mail to you if you send mailing labels to the office.

If you file a Schedule A Itemized Deduction Form with your 1040 Income Tax Return, please add an additional **\$103** to the Property Tax you paid in 2000. This represents each Member's proportion of the Santa Cruz County Property Tax the Park paid on our land during 2000.

## MEN'S CLUB

The April 4th Men's Club lunch will feature **Rodney Maddox** of the California Department of Forestry Fire Department as speaker. He will talk to us about fire safety prevention issues in Paradise Park.

We will also have the prize drawing for a dinner for two at Shadowbrook restaurant since there has been **more than \$700 donated for the jackhammer!**

**Ray Hoffman** is the Chef du jour.

Come at 11:30 to meet other members and prepare for lunch at Noon. All PPMC men are members. The cost for the lunch is \$5.00.

Last month **Peter Eberle** of the Santa Cruz Downtown Association gave us the inside scoop about developments in Santa Cruz. Their program to make the streets appealing and safe for everyone are commendable.

**Bill Uber** and crew did a great job with an enchilada lunch with a true south of the border flair. Thanks for the efforts.

*Chuck Buchanan, President*

## Masonic Memorial Service

### Agnes Dunn-Ruiz

Will be held on  
May 20th  
In the Social Hall

## PPMC E-GROUP

There is an Internet-based e-mail group for Paradise Park Masonic Club. Joining this group allows you to raise questions before all members of the group and then read their responses as they are sent in. The membership in this e-group is limited to PPMC Members, Associate Members, and Alternate Associate Members. You can submit your request to be a member of the group by going to the web site at [www.egroups.com/group/ppmc](http://www.egroups.com/group/ppmc) (Note: use all lower case letters) and following the instructions there.

You may also join by sending an e-mail to [PPMC-subscribe@egroups.com](mailto:PPMC-subscribe@egroups.com).

If you have any other questions, contact **Chuck Buchanan** at 831/471-2314 or e-mail him at [persol@jps.net](mailto:persol@jps.net).

## LONG-RANGE PLANNING COMMITTEE

The next Long-Range Planning Committee meeting is on April 5th at 7:30 to 9:00pm in the Social Hall.

We will review the final draft of the Information Survey and discuss the draft of a proposal for a PPMC Appearance Policy.

Everyone is welcome to attend.



IN



## MEMORY OF

**JOHN REDDICK**  
MARCH 7, 2001



## BIRDS OF PARADISE

By Yvonne Kirby

The Wood Ducks have been returning to Section 6 every year in March for several years to feed on the cracked corn (provided by the Kirbys, Ed.) with the Mallards. Last year and this year their numbers are increased. Three years ago we put up nest box #17 only to have the tree we mounted it on knocked down during the flood. This year in March we mounted it again in a cottonwood along the river. To our amazement 3 pairs of Wood Ducks flew into the tree that afternoon to examine the nesting place. One female landed on top of it and peered down into the hole only to be knocked off when another female joined her. Since then the females have tried to fly into it but none have nested. Either the box is wrong or perhaps they were frightened away by a Cooper's Hawk that patrols the vicinity. I'll keep you posted.

## NEW MEMBER APPLICATIONS

### MEMBER CANDIDATE

**Kristi Doberenz** 01/22/01

To Karoline Doberenz  
466 York Ave.

### ASSOCIATE MEMBER

**Beverly Duba** 3/06/01

To Nancy Gay Kell  
128 Keystone Way

**Kathleen Nagel** 01/4/01

To Kenneth Nagel  
540 Council St.

**Cabot Caldwell** 4/25/00

To Sandra Caldwell  
459 York Avenue

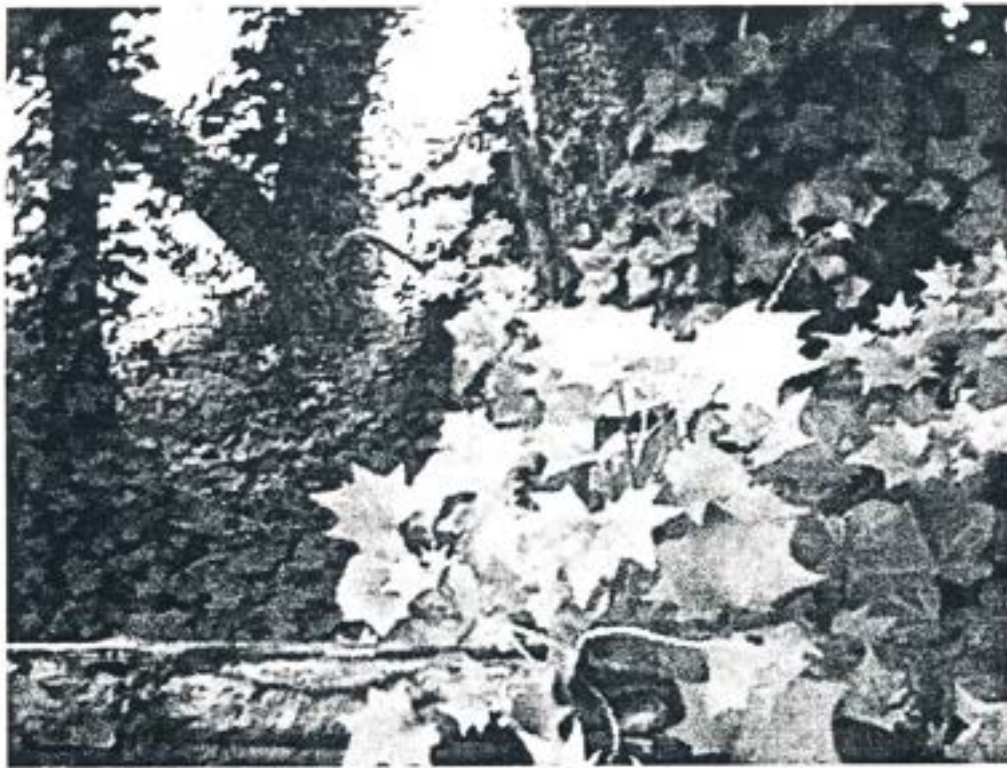
### ALT. ASSOCIATE MEMBER

**Karen Claahsen** 3/9/01

To Dean Logan  
174 St. Bernard St.

**Karen Castro** 2/21/01

To Daniel Macdonald  
528 St. Ambrose St.



This picture was taken by the river bank near the Powder House.

## GERMAN IVY

### A NOXIOUS WEED

German Ivy is a noxious weed that is causing problems all over the world. We have it in Paradise Park. If you see it in the park please do what you can to help us get rid of it. It will damage trees by weighting the branches and causing them to break.

### IDENTIFICATION

Scrambling or climbing herb with soft hairless ivy-like leaves and yellow daisy flowers. To distinguish German ivy note the small ear-shaped appendages at the base of most leaf stalks. German ivy, which has no ray florets, is a daisy - not an ivy.

### HABITATS

Coastal plant communities and lowland forest margins, shrublands, rocklands, roadsides, quarries, farm hedges, wasteland, house gardens. Locally common.

### IMPACT TO BIOTA AND ECOSYSTEMS

Climbs over small shrubs and trees. Can extend up to sub-canopy levels. Hinders

plant growth by smothering and shading. Spreads over large areas of ground beneath the forest canopy stopping the free regeneration of the ecosystem.

### DISPERSAL ROUTES, VECTORS, INFESTATION SOURCES

Plant is spread mostly by the wind or carried by disturbances in the environment. Plants grow well in open environments but will still germinate in the shade of the forest canopy near to its margin.

### MANAGEMENT

Physical Control - Hard to physically remove because plant breaks when pulled. Dig plant out.

### DISPOSAL

Compost or mulch.

### CHEMICAL CONTROL

Readily killed with Roundup.

### RECOMMENDED APPROACH

Spray with Roundup.

## CANASTA ANY ONE ?

Everyone is invited to play Paradise Park Canasta in the small Social Hall from 12:30 to 4:30 on the first Monday of each month (*Knitten Kittens*). If you don't know how to play, we'll teach you the rules.

Come join us - we'd love your good company.

Any questions? Please call

**Pat Rundell, 421-9360**

## Bylaws Revisions

There were good meetings on March 14th and 31st to discuss the revised bylaws. Gary Hursch, PPMC member and attorney who has worked on the revisions, and most of the Board of Directors were present.

Members had a good chance to raise their questions and suggestions.

The results of the discussions will be the final version that will be sent to all members for a vote. The revised bylaws will come with the ballots to vote for new board members.

## Living Trust

By including the wording below in your living trust you can include your Paradise Park membership.

*"In order for Membership to be owned by a Member's Living Trust such trust must contain a provision that the transfer to the Trust is valid and effective only so long as such a provision remains in effect."*

"Notwithstanding any other provision of this trust instrument, the Trustee who is a member, Associate Member or Alternate Associate Member of Paradise Park Masonic Club, Inc. shall have exclusive control and powers relating to Membership of Paradise Park Masonic Club, Inc. Any Trustor, trustee, or beneficiary who is not a Member, Associate Member, or Alternate Associate Member of Paradise Park Masonic Club, Inc. shall have by the corporation and shall not gain ownership of the Membership itself. At all times, the Membership shall be subject to the By laws, Rules, and Procedures of said corporation."

## Summary of Board of Director's Meeting January 27, 2001

### Minutes

Approved the minutes of December 2, 2000

### Treasure Report

Approved and seconded and carried.

### Manager's Report

A. Dual Membership to be discussed at next Month's Agenda.

B. Neighborhood Feud: Regarding wood pile to be moved.

C. Front steps of Paradise Park Office steps to be replaced, have a second bid on cost.

D. Additions and Deletions to the Consent Agenda. Passed by the Board.

E. Insurance. Insurance is appropriate.

F. Building. Jacobson's addition at 321 Royal Arch and Bill Lind's shed at Joppa, are all approved. Need to get Permits from the County.

G. Recommended revoking Memberships of two different Members for lack of paying TADS. Delinquent over two years. A letter to be sent to terminate Members if TADs are not paid in full, at reasonable time per Attorney.

H. Tree Matters. Discussed.

I. Bill Uber and Todd Williams Re; Past Presidents Committee on Covered Bridge. Board approved for Past Presidents Committee to hire a Wooden Bridge Expert for the East Coast to come and advise us about the Covered Bridge. Approved for the Past President Committee to file a request for Water Restriction through Water Resource.

J. Ted Keller, Re; Dispute of Managers decision that a community yard waste pile on corner of King Solomon Drive and St. Ambrose. Agreed that the Park to put in a barrier to protect Mr. Kellers propane tank.

K. Member Myron Kegebein dispute over property line. Park to have property lines surveyed.

L. Covered Bridge Water Main. Discussed.

M. Fraternal Pledge Final Review. Approve and to be in future Park Bulletin.

N. Don Snyder, a Licensed Land Surveyor with Bowman Williams. Postponed until February Board Meeting.

O. Engineers Water Report. No decision made.

P. Recreation Committee Expenditures Oversight. Discussed.

Q. Board agreed that Scooters are the responsibility of the Park Members.

R. Risk of Staff assisting invalid members up and down stairs. Park Staff will not be put in risk of assisting invalid Members up or down stairs.

S. Guest desires to rent Social Hall without Membership. Denied, must have Member sponsorship.

T. Motorcycles. Board will look into it, at a further time.

U. Alcohol Permit for event held on March 10, 2001 at the Social Hall. Sponsored by Member, Natalie Heer Approved.

V. Alcohol Permit for event held on July 7, 2001 at the Picnic Grounds. Sponsored by Member, Jacob Koff. Approved.

X. Alcohol Permit for event held on July 15, 2001 at the Picnic Grounds. Sponsored by Member, Myrl Blum. Approved.

Y. Alcohol Permit for even held on August 19, 2001 at the Picnic Ground. Sponsored by Member, Myrl Blum. Approve.

X. All names following have been approved by the Board:

Henry Ames transfer of Membership at 289 The Royal Arch to his son Member Carl Ames.

Member Louise Schillig designates her son, Charles Decker, to be the Associate Member 282 Keystone

Roger Coit designates his daughter, Cheryl Pozzi, to be Alternate Associate at 142 St. Alban.

Helen Dodge has designated her daughter, Heather Dodge, to be Associate Member at 645 St. Augustine.

Pat Rundell, to become a Member at 100 Keystone Way due to the death of her husband Leonard.

Betsy Ward to become a Member at Eastern Star Road, due to the death of Father, John Ward.

Helen Dodge's daughter to become Alternate Associate, Sharon Radovich, at 645 St. Augustine.

Linda Dobson's son James Dobson to become Alternate Associate at 347 Royal Arch.

Chet Downing's son Butch Dowling to become Alternate Associate at 592 Keystone.

Norene Hansen's guest, son Jason Mason and friend, Tiffany Olson at 362 Eastern Star Road. Guest Privileges approved.

Lynn Raadik extended guest privileges for daughter Jan Fragoso at 187 St. Bernard Street. Approved.

Motion made to adjourn, seconded and carried.

## Summary of Board of Director's Meeting February 24, 2001

Minutes Approved

Treasurers Report Approved and seconded and carried

Consent Agendas Approved

Associate Members Candidates

Member Louise Schilig has designated her son, Charles (Rick) Decker III, to become the Associate Member at 289 Keystone Way. Approved

Member Lynn Raadik, has designated her daughter, Jan Fragoso, for Extended Guest Privileges at 187 St. Bernard Street. Approved.

### Managers Report

A. New Employee for maintenance, Osman Boswell and Willow Jones.

B. Bill Uber to install a 4" water line on the Covered Bridge with our help. Tabled at this time.

C. Tree Removal and Trimming Form-Rules will remain the same and more simplified.

D. Washington Walkway-Re: Extension of the retaining wall and replace a portion of rotten logs. Approved.

E. Crew has started painting park benches and green swings. Two members have volunteered to help.

F. Picnic tables are in need of repair. Will ask for Volunteers to help finish this project.

G. Board discussed Dual Membership.

### Oral Communications

H. Discussion on Members fence, and

*(Continued on page 6)*

(Continued from page 5)

Board Members to look at fence and get back with Member.

I. Bill Uber and Todd Williams-Re: Past Presidents Committee Report on the Covered Bridge. Discussed by the Board.

J. Rescinded a fine, and extended guest privileges for 6 months to a daughter of a member.

#### Proposed Bylaws

K. Bylaws. Discussed

L. 1/2 Bylaw. Discussed.

M. Proposed Installation of Telephone Facility- Highway 9, Santa Cruz. Discussed.

#### New Business

N. Front Porch of Office Building: Discussed about getting more information on having a Contractor replace and repair front steps.

#### Correspondence

O. Board reviewed correspondence.

Motion made to adjourn, seconded and carried, at 12:00

## **UNOFFICIAL BOARD MINUTES**

WILL BE SUBMITTED FOR APPROVAL 4/28/01  
March 24, 2001

Meeting called to order at 8:00 a.m. by President Tod Likins. In attendance were: Vice President Steve Taylor, Secretary Don Schmidt, Treasurer Malcolm Hotchkiss, Director at Large Jerry Morgan and Manager, Alan Schattenburg. Invocation led by Steve Taylor.

#### 2.0 CONSENT AGENDA

All approved by the Board as follows:

Approval of the February 24, 2001 minutes.

Approval of Financial Statement submitted by Treasurer.

Extended Guest Privileges Renewal Request.

Member Sam Taylor-Re: Renewal of Extended Guest Privileges for friend, Pamela Hurp, at 415 Joppa St.

Member Lisa Mac-Re: Renewal of Extended Guest Privileges for son, Justin Granata, and his fiancée, Tara Lemos, at 602 Keystone Way.

Member Cara Coleman-Feyas-Re: Renewal of Extended Guest Privileges for friend, Tim Nelson, at 326 The Royal Arch.

Membership Application for Review.

Kristi Dobrenz-Re: Membership at 470 York Ave.

Associate Applications for Review

Beverly Gay Duba-Re: Associate Membership to mother, Nancy gay Kell, at 128 Keystone way.

Alternate Applications for Review

Karen Castro-Re: Alternate Associate Membership to son-in-law, Daniel Macdonald, at 528 St. Ambrose Street.

Karen Claahsen-Re: Alternate Associate Membership to father, Dean Logan, at 174 St. Bernard Street. Transfer of Membership.

Approval of Associate Member, Shirley Reddick, to inherit the Membership at 163 St. Bernard Street, due to the death of her husband, John Reddick.

#### BEFORE THE BOARD

Extended Guest Before the Board.

Stephen Kiel-Re: Extended guest Privileges for friend, Luc De Faymoreau, at 185 St. Bernard Street. Did not appear.

Associate Members Before the Board

Christopher Hawkins-Re: Associate Membership to mother, Margaret Hawkins, at 421 & 423 Joppa Street. Approved.

Alternate Associate Member's Before the Board

Cheryl Pozzi-Re: Alternate Associate Membership to father, Roger Coit, at 142 St. Alban Street. Approved.

Barbara Harris-Re: Alternate Associate Membership to father, Daniel Brown, at 307 the Royal Arch. Approved.

#### MANAGER'S REPORT

Ball Park Permit-Re: Fish and Game have issued the permit, but no work can begin until it is determined if we need a "Streambed Alteration Permit." No action taken at this time.

Construction of Front Porch-Re: Cindy Crogan, contractor, will work last week of March or the first week of April. Discussed.

#### ORAL COMMUNICATIONS

Bill Uber -Re: Bridge and Water. Board will wait for Arnold Gratton Re-

port, before making a decision. Water Rights Application to be sent to Water Resource Board, Calif.

Jim Wells-Re: Castle Property. Property will be rezoned Feb 28, 2001 and will have to go before the Board of Supervisors. Also have property appraised by three different appraisers. At Net Value.

#### UNFINISHED BUSINESS

Covered Bridge-Re: Water Line Replacement. Board approved to put in new water line, 3" on pedestrian side. Cost \$7,700.00. Approved.

Easement for Phone Company. Tod to continue negotiating with Phone Company.

Bylaws and Rules and Procedures Review. Discussed.

#### NEW BUSINESS

Grant writing. Discussed and tabled.

#### INFORMATION

Incident Reports. Discussed

#### CORRESPONDENCE

Correspondence. Board reviewed and discussed.

#### EXECUTIVE SESSION

The Board went into Executive Session at 11:15 AM and reconvened to open session to hear Lloyd Ames, Gr. Laskey, Scott Snyder, and Sarah Laskey concerning a fire truck. Board voted 3 to 1, to purchase truck for the amount of \$1500.00.

Motion made to adjourn, seconded and carried at 2:00

*Respectfully Submitted,  
Donald Schmidt,  
Secretary*

### **Membership Rosters**

Will be mailed with your Ballots toward the end of May. If you have any changes to your address or phone number/s please call them into the office at 831-423-1530

### **Grey Bears Need Brown Paper Bags**

Please leave any extras you may have at the office.

## Sewing Class

If you are interested in improving your sewing skills call Shari Keller—425-2646. Any level of experience is welcome.

She will hold a class on Thursday evening from 7 to 10 p.m.

## POST CARDS

### WE ARE ALIVE AND WELL AND NOT IN JAIL!

From Doug and Pam Hipsley (They are home now but here are a few items you can ask them about.)  
Cancun

We spent a day on Isla Mujeres touring the island with a golf cart. (I wonder how they got back, but maybe there are two way roads in Cancun. Ed.)  
Paamul 2/8 - 2/11

Visited Xcaret, did a lot of water stuff, swimming, snorkeling and floating 1,500 ft in a underground river. This is the ultimate tourist trap, Disneyland of the Yucatan!

Had a failure in one of my towing arms on the way to Paamul. Whenever I applied the brakes, one of the arms would collapse and the Durango would swing around a little.

On Saturday we took the ferry to Cozumel. Too many tourists for us! We spent 5 pesos and got on a bus and went around the island with the locals. The boat ride was the highlight. Carmen del Playa is the ferry terminus on the mainland. It is a fun and a very busy Mexican City. I had my 1st Mexican Whopper at a Mexican Burger King.

Toured the Tulum and Coba ruins. On the way back from Coba we picked up 2 young people hitchhiking. They were going to a monkey reserve on a lake. We ended up going with them and went on a tour of the reserve. The guide only spoke Spanish, but the young couple (from Canada) spoke fluent Spanish so they translated the tour for us. It was great... we hiked through the jungle and saw several monkeys (Spider Monkeys)... even a baby one. The guide explained all about the area.

Editor's Note: There is a lot more about Doug and Pam's great trip, but no more room in the Bulletin. Ask them for the rest of the details.)

## Spring Cleaning

While you begin your Spring-Cleaning keep the **PPMC Annual Flea Market** in mind.

The office will take your donations Monday through Friday, 9 a.m. to 4 p.m. Please remember to assure your donations are useable items. Whatever we have to dump has a disposal fee that is deducted from the proceeds.

The funds raised from this event benefit the Recreation Fund.

We have included a Preview Night that includes a raffle and auction that were fun and successful last year. We need volunteers to help make this event a success. Watch for the upcoming plea for assistance.  
Natalie and Jim Clark

## Favorite Recipe

We've enjoyed them at Men's Club and at the March Pot Luck and now you can make them for yourself. This recipe from Virginia and Bill Uber

### ENCHILADAS

- 1 C Cilantro
- 1 pkg. Flour tortillas (10 count)
- 1 1/2 lb. Hamburger (boiled)
- 1 lb. Cheese (grated)
- 2 Onions, chopped
- 1 Can sliced olives

### Sauce

- 2 T. Oil
- 2 T. Flour
- 2T Chili powder
- 8 oz. Cans tomato sauce
- 2 t. Oregano leaves
- 2 t. Granulated garlic
- 2 t. Black pepper

Heat oil, mix in flour until smooth. Cook slow until thick or coats back of spoon. Add tomato sauce plus 1 can of water. Mix in other ingredients.

Spray pan, then pour small amount of sauce in bottom of pan 8 x 10. Dip tortillas in sauce, handful of meat, cheese, black olives, chopped onions and cheese. Roll, top with cheese cover with foil and bake, 350 degrees for 35 minutes.

## Masonic Home

Judy and I met with Hallie Holtzman, Director of Marketing, for Masonic Homes of California at the Masonic Home in Union City on 3/27. Our objective was to open a line of communication with the Masonic Homes and Paradise Park.

Hallie was a great host and provide a tour of the newly decorated building and many of the excellent health and recreation facilities. The remodeling has turned out beautifully since the atmosphere is much like a fine resort hotel. As always the people are friendly and there is a genuine family feeling throughout the whole facility.

Hallie and James McKay, who manages the admissions process, talked with us over lunch about the application process and the three payment options. All are designed to provide a plan that is best for each person's situation. With the options of an entrance fee and monthly payment, monthly rental fee, or partial assignment of assets (75% of assets and income) you have more attractive choices for helping to pay your way. The Masonic Home are supported by the Masonic Homes Endowment Fund to help assure that no eligible retiree will be turned away because of limited financial resources.

We discussed a plan to arrange for Hallie to come to Santa Cruz to visit Paradise Park and to make a presentation to all interested Masons in the area. And, we hope to arrange periodic visits to the Masonic Home in Union City by van or bus to give more people a chance to visit.

Virgil Land said to say hello to all of you and so did Lillie Birchenall. They would be happy to see you. If you have any questions or would like to participate in a trip to Union City, let us know.  
Chuck & Judy Buchanan

## BINGO!

Wednesday, April 18

Wednesday, May 23

Donations for prizes are welcome! Call the Bingo Committee:

Yvonne Jones 427-2346

Pat Rundell 421-9360

Member's improvements offered for sale as of March 14, 2001. All sales of below improvements and/or allotment use privileges are subject to the approval of the Membership and authorization to transfer rests with the Board of Directors.

### IMPORTANT NOTICE

The sellers solely provide the descriptions of improvements for sale. Such information is not verified or checked for accuracy by Paradise Park Masonic Club, Inc. The Club does not warrant, and disclaims any responsibility for, the accuracy, truthfulness or completeness of any information provided. All questions about allotment improvements should be addressed solely to the seller.

ADDRESS	MEMBER	PRICE	DESCRIPTION
<b>SECTION 1</b>			
462 York Ave.	Patricia Herzog 458-9841	\$199,500	REDUCED. SELLER MOTIVATED. Lovely newer home. Sunny lot w/bright interior. Tastefully decorated, 2 BR, 2 BA, 1,100 sq. ft; fully insulated w/forced air furnace plus gas log stove, Jennair range; island in kitchen; full attic, walk-in closet in MB, 1 car garage; large deck and side brick patio. Includes all appliances and some furniture.
472 York Ave.	Jon Rieden (650) 574-4547 Cell # (650) 483-3587	\$195,000	Newly renovated home with large kitchen and open floor plan. Skylights and bright sunlight throughout. Large redwood deck with built-in seating. 2 BR, 1 BA, with new windows, carpet, ceiling fan. Washer/Dryer and dishwasher included. Appliances included. Furnishings negotiable
428 Joppa	John Garcia By appointment Only! (650) 952-3123 426-6187	\$425,000	River front property, extra large parcel, complete new kitchen and bathrooms, gas and electric heaters, fireplace, two car garage, ample parking. Beautiful large yard with built in barbecue, fountain and deck. Home and garage are stucco. Might negotiate on furniture. All new appliances, washer and dryer, stove, dishwasher, microwave, and refrigerator, new light and fan in kitchen.
<b>SECTION 2</b>			
279 Keystone Way	Cal DeVecchis 420-0749 By appointment Only!	\$279,000	The first and most lasting sunshine of the day. Shines upon a household that has been completely upgraded. A gardeners and bird watchers delight with plenty of privacy. 3 BR, 1 BA, delightful kitchen and living room. New deck area a bonus winterized 10' x 13' laundry room. Study and computer area. One bedroom is a detached 13/8 x 9/8 cottage. Room for at least 3 cars. All modern appliances included, as is any modern furniture of your choice. Has a new modern fireplace new roofing, new sliding glass door; additional storage area under cottage and ... front of bonus winterized laundry area. I wish also to include our family's gratefulness for the best neighbors throughout the years.
<b>SECTION 4</b>			
696 St. Johns Ave.	Robert Cranke 459-0741	\$100,000	Cozy cabin on sunny lot. Improvement approx. 800 sq. ft., lot 1,950 sq. ft., 2 BR, 1 BA, skylight in bathroom, kitchen remodeled; like new cabinets, utility room with washer and dryer included, dining room, knotty pine living room, 10' x 14' extra room in back of main house (wired for 220), forced air heating, wood burning stove, electric water heater, 2 separate telephone lines, new circuit breaker, septic tank 1,500 gal; concrete, large metal tool shed, and small carport. Like new appliances, most furniture good condition to go with house.
678 St. Paul Street	Constance Sonnichsen c/o Deke Sonnichson (650)326-7679	\$85,000 As Is	Cabin on Eagle Creek, 3 BR, 2 BA, large kitchen and large living room, dining area, electric floor heating. Appliances included: Refrigerator, gas range, and turkey roaster. Furnishings include Beds, chairs, and sofas.
<b>SECTION 6</b>			
147 St. Alban Street	Call: Bill Thompson 460-1361	\$96,000	2 BR, 1BA, kitchen, living room w/fireplace, gas heat, carport, and storage shed. Stove and refrigerator included. Available August 1, 2001
170 St. Bernard St.	Hazel Kindwall c/o Carolyn Unger 469-9107	\$285,000	Sunny lot, 2 BR, 1 1/2 BA, no road noise, no flood danger, garage parking, and spaces on both sides, corner lot. Appliances include: oven range, some furniture, drapes.
146 St. Alban	Larry Gilliland 423-5634	\$335,000	Garage 22' x 22' (484 sq. ft.), faces Keystone and front of house faces St. Alban. House is approx. 1,400 sq. ft., built in 1994 with new septic. It has forced air heat, propane free standing stove, and six-year-old appliances.
120 Keystone Way	Gordon Crafts 423-3228	\$350,000	Large 2 BR, 1 1/2 BA, location in front of Park, unhindered view of river and ... est, improvement approx. 1,600 sq. ft., central gas heating, two phone lines, new roof, storage shed in carport, in and out driveway, ample parking. Room for expansion. Furnishings include: 1 MAC computer and desk